

Accessories (must be ordered separately)

ProfiLux LED 320/DMX/02 (see page 94)	50717
ProfiRing LED 320/DMX/02 (see page 96)	50718
ProfiPlane LED 320/DMX/02 (see page 98)	50719
Extension cable hybrid (see page 120)	50728

Underwater LED Driver / DMX / 02		
Dimensions (L x W x H)	[mm]	154 x 130 x 89
Slot		4 x Hybrid (Data + Power)
Protection class		IP 68
DMX Connection		1.0 m with Box
Power Connection		1.0 m with Box
Weight	[kg]	2.9
Order no.		50720



	Fresh Water	Pool Water	Sea Water	220-240 V	400 V	110-120 V	50 Hz	60 Hz	12 V AC	24 V DC	DMX	DMX/RDM	Plug and Spray
Profilux 370 LED 12 V/01	✓	✓	✓	✓	✓	✓	✓	✓	✓	✓	✓	✓	✓
Profilux 370 LED 24 V/01	✓	✓	✓	✓	✓	✓	✓	✓	✓	✓	✓	✓	✓
LunAqua 10 LED /01	✓	✓	✓	✓	✓	✓	✓	✓	✓	✓	✓	✓	✓

PROFILUX 370 LED / LUNAQUA 10 LED

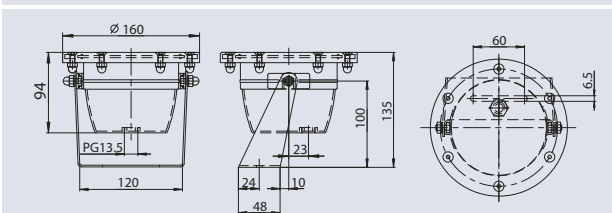
Our well-proven spotlights are now equipped with a warm-white, energy efficient LED platine generating an impressive illumination. Both are equipped with performance-adjustment capability should the surrounding temperature increase to avoid damaging. Applicable at voltages are 12 V and also 24 V.

Product characteristics Profilux 370 LED

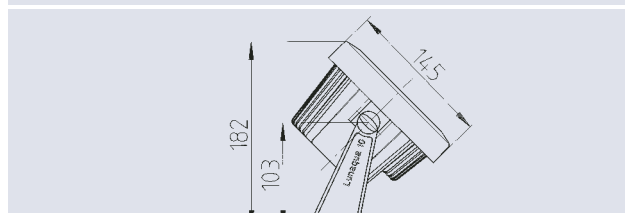
- 12 V AC/24 V DC compatible
- Stainless steel housing, warmwhite and circular LED platine
- Up to 8 spotlights of the 12V version can be connected to transformer UST 150 by using the power boxes
- Temperature protection
- Reverse polarity protection
- Incl. illuminant (not dimmable)

Product characteristics LunAqua 10 LED

- LED Spotlight warmwhite
- Compatible with connection cable and transformer of the LunAqua 10 Halogen system
- 12 V AC/24 V DC compatible
- Up to 8 spotlights of the 12V version can be connected to transformer UST 150 by using the power boxes
- Temperature protection
- Reverse polarity protection
- Incl. illuminant (not dimmable)



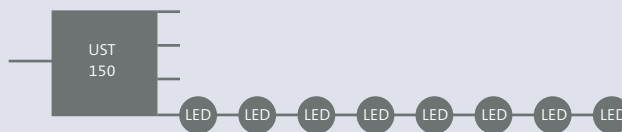
Profilux 370 LED 12V/01 and Profilux 370 LED 24V/01



LunAqua 10 LED/01

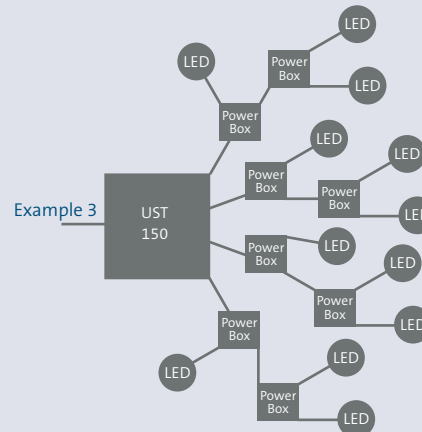
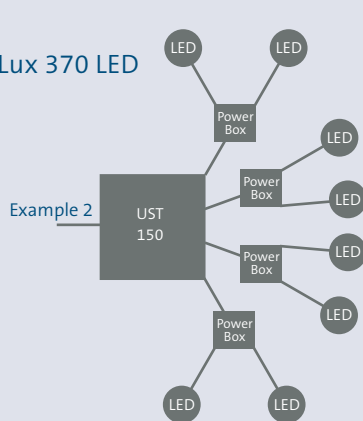
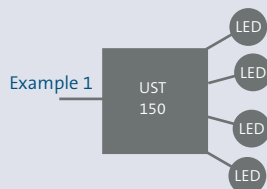
Series circuit:

- max. 8 x ProfiLux 370 LED in series
- for a series circuit the PowerBox plus cable is additionally required per spotlight!



Star circuit::

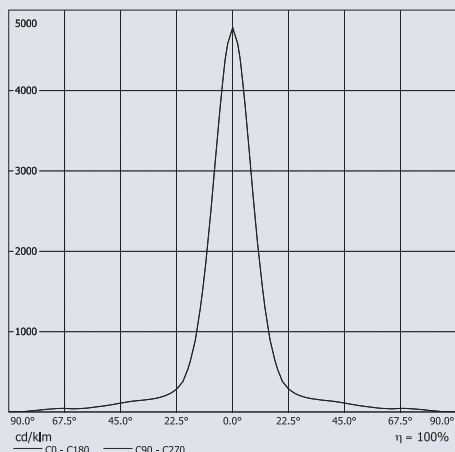
- max. 12 x LunAqua 10 LED / ProfiLux 370 LED



Accessories (must be ordered separately)

Connecting cable 24V DC/01 (see page 118)	Order no.
Cable 24V DC /1.0 m/01	12762
Cable 24V DC /3.0 m/01	12552
Cable 24V DC /7.5 m/01	12553
Cable 24V DC /15.0 m/01	11720
Power Box 24V DC/01 (see page 118)	50493
Underwater power supply 250 / 24 V / 01 (see page 122)	50733

Connecting cable 12V AC/01 (see page 118)	Order no.
Cable 12V AC /1.0 m/01	12768
Cable 12V AC /3.0 m/01	12374
Cable 12V AC /7.5 m/01	12375
Cable 12V AC /15.0 m/01	11740
Power Box 12V AC/01 (see page 118)	50492
Underwater transformer UST 150/01 (see page 122)	50401
Underwater transformer UST 150/A/01 (see page 122)	50517



Abstand [m]	Kegeldurchmesser [m]	E(0°) E(C0)	9.1°	lx
0.5	0.16	E(0°) E(C0)	9.1°	6981 3372
1.0	0.32	E(0°) E(C0)	9.1°	1745 843
1.5	0.48	E(0°) E(C0)	9.1°	776 375
2.0	0.64	E(0°) E(C0)	9.1°	436 211
2.5	0.80	E(0°) E(C0)	9.1°	279 135
3.0	0.96	E(0°) E(C0)	9.1°	194 94

Abstand [m] Kegeldurchmesser [m] Beleuchtungsstärke [lx]
 — C0 - C180 (Halbstrahlwinkel: 18.2°)

	ProfiLux 370 LED 12V/01	ProfiLux 370 LED 24V/01	LunAqua 10 LED/01
Dimensions (Ø x H)	[mm] 160 x 135	160 x 135	145 x 100
Voltage	[V/Hz] 12 AC / 50-60	24 DC	12 AC / 24 DC / 50
Power consumption max.	[W] 10	10	10
Light intensity; Luminous flux	[cd/lm] 1800/370	1800/370	1800/370
Beam angle	[°] 20	20	20
IP 68	IP 68	IP 68	IP 68
Dimmable	no	no	no
Cable length	[m] 1.0 (with box)	1.0 (with box)	—
Material	Stainless Steel	Stainless Steel	Plastic
Weight	[kg] 2.5	2.5	1.6
Order no.	50367	50474	50366

* bulbs excluded from the guarantee

Please consider the informations given in the manual if you wish to connect existing and new products!



	Fresh Water	Pool Water	Sea Water	50 Hz	60 Hz	12 V AC	24 V DC
Profilux E 101 Halogen							
LunAqua 10 Halogen							

PROFILUX E 101 AND LUNAQUA 10 HALOGEN

Thanks to the compact design the Profilux E 101 to accentuate public areas with focused light effects and allow sculptures, water features, individual fountains, or plants, to radiate in light.

The housing of the halogen spotlight is made of robust stainless steel and is fitted with a PG 13.5 cable gland, as well as with a pivoting spotlight holder – also made of stainless steel.

Product characteristics at a glance

- High-quality stainless steel spotlights
- Stainless steel bracket for simple and safe installation
- Halogen bulbs: 50 W, 75 W and 100 W
- With PG 13.5 cable entry

The spotlight, made of impact-resistant plastic, is connected to the 12-Volt safety transformer via special connections that can also be used underwater. This means that even greater distances to the 230 Volt outlet can be bridged with conventional cable. The transformer is equipped with 4 couplings to connect either 4 x 35 W, 3 x 50 W or 2 x 75 W, 12 V. The special structured glass cover, in conjunction with the aluminium reflector, creates optimal light efficiency. The mounting bracket enables a pivot range of approximately 180°.

Product characteristics at a glance

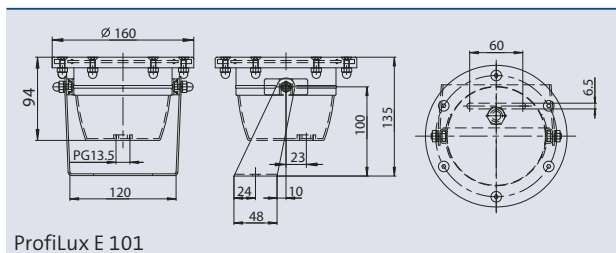
- Accentuates with rich light effects
- Can be implemented underwater and above the water surface (excl. 75 W lamp)
- Housing made of impact-resistant plastic
- Structured special glass cover for optimal light efficiency
- Mounting bracket with 180° pivot range



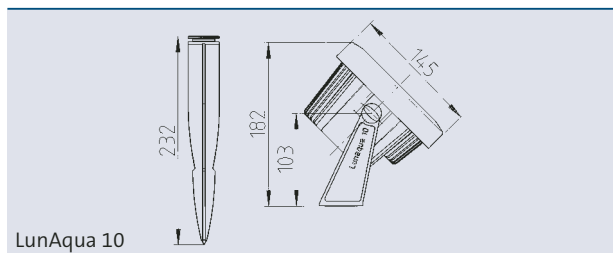
Profilux E 101



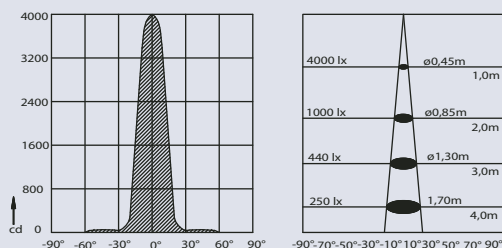
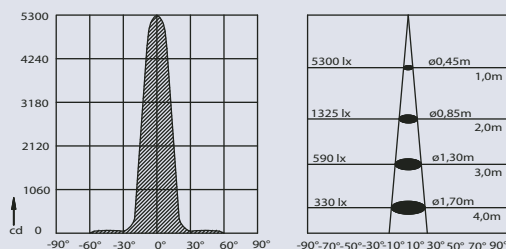
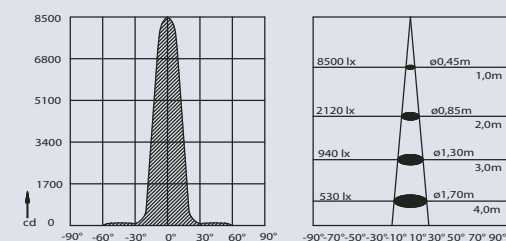
LunAqua 10



ProfiLux E 101



LunAqua 10

Halogen 50W 24°

Halogen 75W 24°

Halogen 100W 24°

Accessories for ProfiLux E 101 (must be ordered separately)

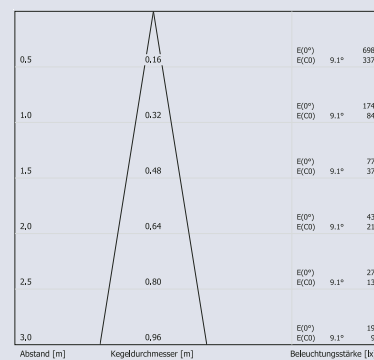
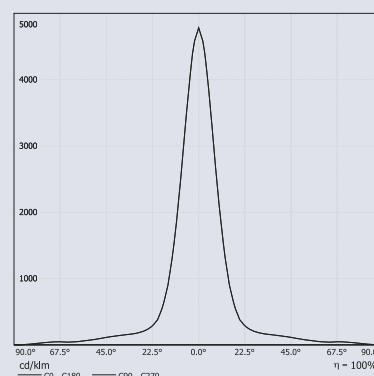
Halogen reflector bulb			
Voltage [V/Hz]	12/50-60	12/50-60	12/50-60
Power output [W]	50	75	100
Beam angle	24°	24°	24°
Order no.	52939	52941	52943

ProfiLux E 101 Delivered without bulb, transformer and cable

Dimensions (∅ x H)	[mm]	160 x 135
Beam angle	[°]	24
Light intensity	[cd]	4000-5000
Bulb	[V/Hz]	12/50-60
Power consumption max.[W halogen]		50, 75 W halogen
Protection class		IP 68
Cable entries		1x PG 13.5
Material		Stainless steel
Weight	[kg]	1.5
Order no.		56133

*bulbs excluded from the guarantee

Please consider the informations given in the manual if you wish to connect existing and new LunAqua 10 products!


Accessories for LunAqua 10 (must be ordered separately)

Bulbs halogen bulb			
Colour	white	white	white
Voltage [V/Hz]	12/50-60	12/50-60	12/50-60
Power output [W]	35	50	75
Order no.	54035	54036	54037

Accessories (must be ordered separately)

Underwater transformer UST 150/01 (see page 122)	50401
Underwater transformer UST 150/A/01 (see page 122)	50517
Connecting cable 12V AC/01 (see page 118)	Order no.
Cable 12V AC /3.0 m/01	12374
Cable 12V AC /7.5 m/01	12375
Cable 12V AC /15.0 m/01	11740
Power Box / Underwater power supply	Order no.
Power Box 12V AC/01 (see page 118)	50492

Spotlight LunAqua 10 halogen Delivered without bulb, transformer and cable

Dimensions in mm (∅ x H)	[mm]	145 x 100
Nominal voltage	[V/Hz]	12/50-60
Bulb max.	[W halogen]	35 – 75 W halogen
Beam angle	[°]	24
Protection class		IP 68
Weight	[kg]	1.1
Order no.		54034



	Fresh Water	Pool Water	Sea Water	220-240 V	400 V	110-120 V	50 Hz	60 Hz	12 V AC	24 V DC	DMX	DMX/RDM	Plug and Spray
LunAqua 5.1	✓	✓	✓	✓	✓	✓	✓	✓	✓	✓	✓	✓	✓
UWS TN 508	✓	✓	✓	✓	✓	✓	✓	✓	✓	✓	✓	✓	✓

LUNAQUA 5.1 / UWS TN 508

The LunAqua 5.1 creates dazzling beauty, particularly underwater. This powerful spotlight brings even more light into the darkness and can also be installed in larger fountain systems.

LunAqua 5.1 has been especially designed for underwater operation and can be operated with PAR 38 100 W reflector bulbs in 12 Volts. This powerhouse convinces by a perfect price/ performance ratio, easy and safe installation, and versatile implementation as a single spotlight or in parallel group cabling. Input and output are fitted with high-quality PG cable glands for H05 or H07 cable.

Product characteristics at a glance

- Maximum power above the water surface or underwater
- Housing made of impact-resistant plastic
- Extremely corrosion resistant
- PAR 38 reflector bulbs with 100 W
- Including stainless steel mounting bracket



LunAqua 5.1

Individual fountains, water effects, or plants are easily illuminated with the small but robust UWS TN 508 spotlights.

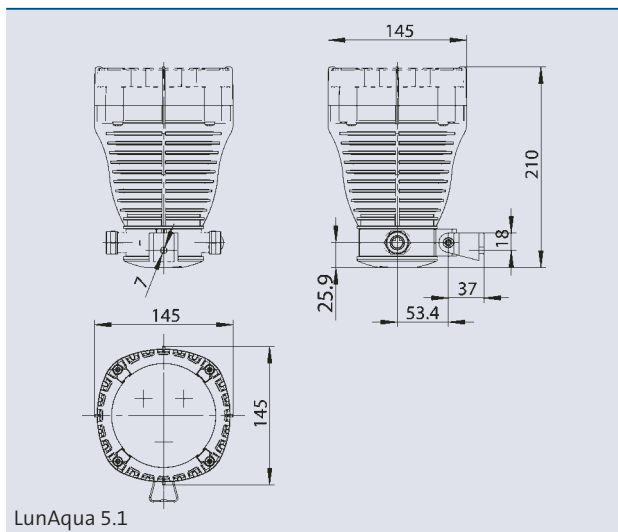
The compact design with a robust and corrosion-resistant Tombac construction: The UWS TN 508 spotlight is ideal for use in public displays. And the PG 11 cable glands enable individual spotlights to be connected in a chain.

Product characteristics at a glance

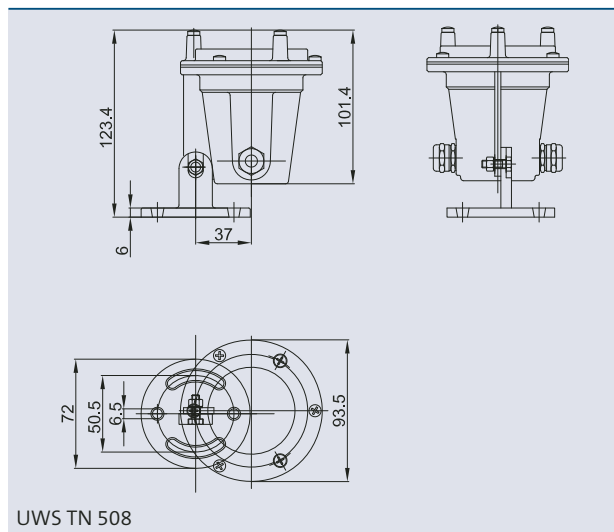
- Accentuates with rich light effects
- Can be implemented underwater and above the water surface
- Power consumption: 50 Watts
- Can be switched in series for a lighting chain



UWS TN 508



LunAqua 5.1



UWS TN 508

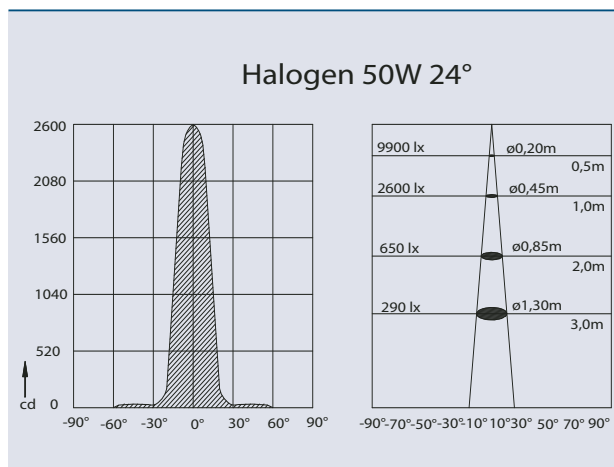
Accessories for LunAqua 5.1 (must be ordered separately)

Reflector bulb PAR 38	
Voltage [V/Hz]	12/50-60
Power output [W]	100
Beam angle	30°
Weight [kg]	0.4
Order no.	56812

Connection cable 12V AC/01 (see page 118)		Order no.
Cable 12V AC /3.0 m/01		12374
Cable 12V AC /7.5 m/01		12375
Cable 12V AC /15.0 m/01		11740
Power Box / Underwater power supply		Order no.
Power Box 12V AC/01 (see page 118)		50492

Underwater transformer UST 150/01 (see page 122)	50401
Underwater transformer UST 150/A/01 (see page 122)	50517

LunAqua 5.1 Delivered without bulb, transformer and cable		
Dimensions (ø x H)	[mm]	145 x 210
Cable inlets		2x PG 16
Cable diameter		H05 and H07
Power consumption	[W]	max. 100
Nominal voltage	[V/Hz]	12/50-60
Protection class		IP 68
Mounting		E 27
Cable length		–
Weight	[kg]	1.2
Order no.		57427


Accessories for TN 508 (must be ordered separately)

Replacement Halogen reflector bulb		
Power consumption	[W]	50 W
Beam angle		24°
Order no.		51394

UWS TN 508 Delivered without transformer and cable, with bulb		
Dimensions (ø x H)	[mm]	94 x 125
Nominal voltage	[V]	12
Power consumption	[W]	50
Light intensity	[cd]	2600
Beam angle		24°
Protection class		IP 68
Cable inlets		2x PG 11
Material		tombac
Weight	[kg]	1.10
Order no.		51446



	Fresh Water	Pool Water	Sea Water	220-240 V	400 V	110-120 V	50 Hz	60 Hz	12 V AC	24 V DC	DMX	DMX/RDM	Plug and Spray
UWS T 111	✓	✓	✓	✓	✓	✓	✓	✓	✓	✓	✓	✓	✓
UWS TS 111	✓	✓	✓	✓	✓	✓	✓	✓	✓	✓	✓	✓	✓

UWS T 111 AND UWS TS 111

These underwater spotlights have been designed with extra strength for professional use in public installations. In underwater operation they effectively set the stage for fountains and water features, out of the water they illuminate sculptures, buildings, or trees.

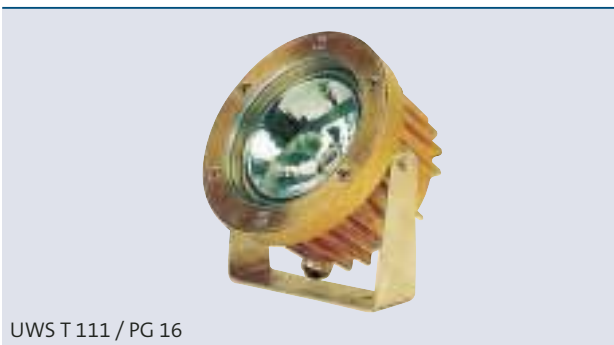
They have been designed with appropriate stability and strength for their area of implementation. The spotlight housing is made of cast tombac and has a PG 16 cable gland for UWS T 111 and UWS TS 111.

Halogen reflector bulbs are protected by a 15 mm thick, shatterproof safety glass lens, which is screw-fastened to the housing. The smooth surface ensures long cleaning intervals.

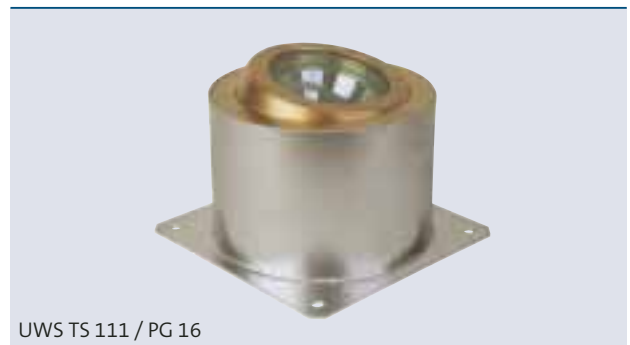
The UWS TS 111 spotlight can be turned in all directions by 12.5° in its stainless steel installation housing. Two clamp rings enable precise alignment on site.

Product characteristics at a glance

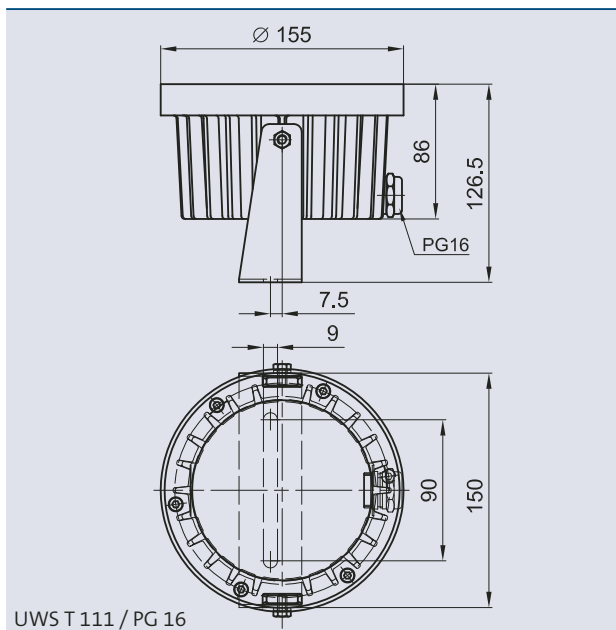
- Extremely robust tombac and stainless steel design
- Safety glass cover
- Flat surface for easy cleaning
- Extremely corrosion resistant
- Can also be used out of the water
- Supplied exclusive of connection cable, transformer, and bulb



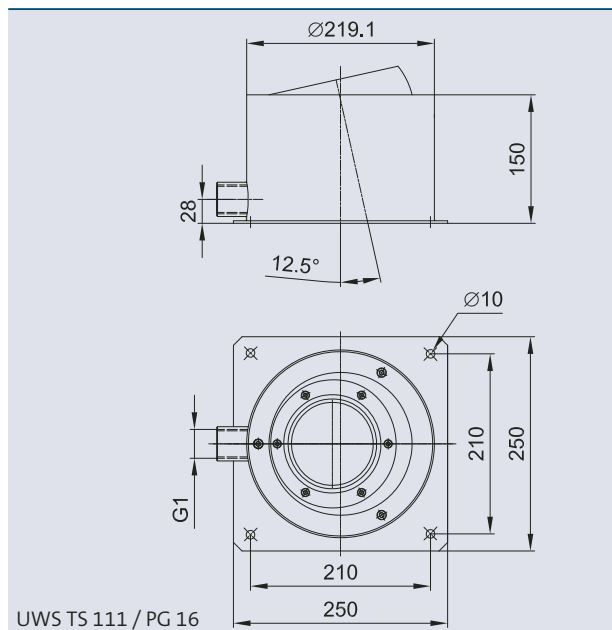
UWS T 111 / PG 16



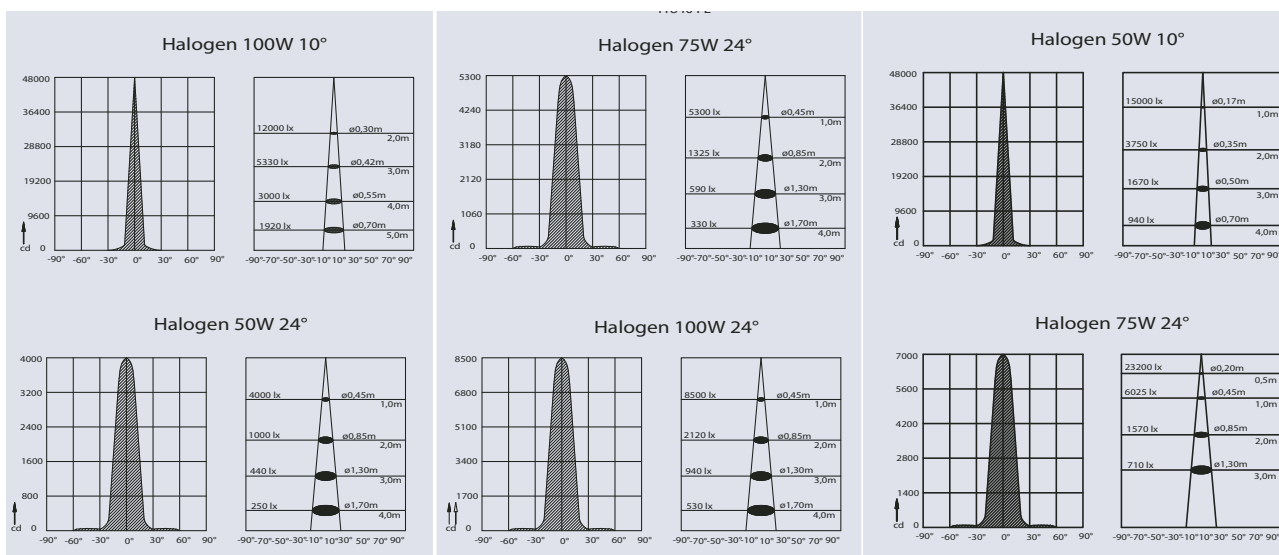
UWS TS 111 / PG 16



UWST 111 / PG 16



UWS TS 111 / PG 16



Accessories for UWS T 111/TS 111 (must be ordered separately)

Halogen reflector bulb 12 V				
Colour	white	white	white	white
Power Output [W]	50	75	100	100
Beam angle	24°	24°	10°	24°
Order no.	52939	52941	52942	52943
Underwater transformer UST 150/01 (see page 122)				50401
Underwater transformer UST 150/A/01 (see page 122)				50517

Connecting cable 12V AC/01 (see page 118)		Order no.
Cable 12V AC /3.0 m/01		12374
Cable 12V AC /7.5 m/01		12375
Cable 12V AC /15.0 m/01		11740
Power Box / Underwater power supply		Order no.
Power Box 12V AC/01 (see page 118)		50492

Underwater spotlight Delivered without bulb, transformer and cable		UWST 111	UWS TS 111
Dimensions (Ø x H)	[mm]	155 x 127	219 x 155
Nominal voltage	[V]	12	12
Power consumption	[W]	50, 75 or 100	50, 75 or 100
Light intensity	[cd]	4500 – 50000	4500 – 50000
Beam angle	[°]	10 or 24	10 or 24
Protection class		IP 68	IP 68
Cable inlets		1 x PG 16	1 x PG 16
Material		tombac/stainless steel	tombac/stainless steel
Cable length		–	–
Weight	[kg]	4.0	11.0
Order no.		52904	52909



	Fresh Water	Pool Water	Sea Water
Lamp Holder			
Freestand Light			

LAMP HOLDER AND FREESTAND LIGHT

For fast, easy, and secure mounting of up to six spotlights with the associated underwater transformers.

The holders can be mounted on all types of pipes above and below the water surface with an adjustable quick clamp fixture. Thus the spotlights can be symmetrically fixed in place around a nozzle pipe.

Product characteristics at a glance

- Lamp Holder compatible with:
 - ProfiLux LED 320/DMX/02 (50717)
 - ProfiLux E 100 (56898)
 - ProfiLux E 101 (56133)
 - LunAqua 10 halogen (54037)
 - ProfiLux LED 12V/01 (50367)
 - ProfiLux LED 24V/01 (50474)
 - LunAqua 10 LED/01 (50366)
- For Pipes from ½ " to 2" (24 mm up to 67 mm)

Thanks to the corrosion-resistant total metal construction and the robust design the spotlight holders are extremely reliable and offer a long service life.

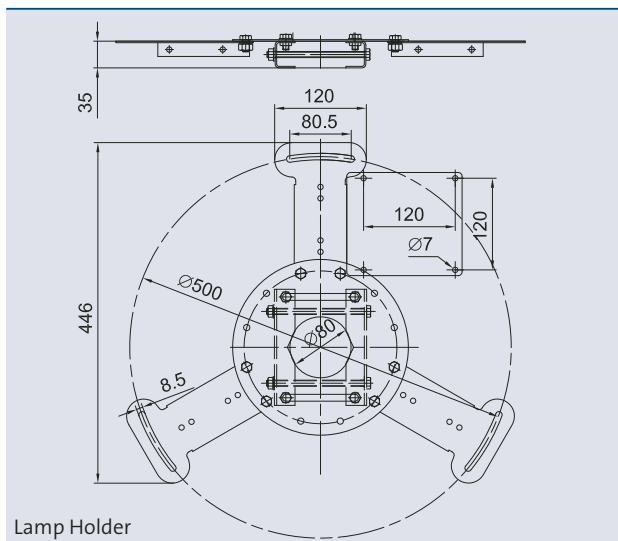
Product characteristics at a glance

- Stand for lights compatible with:
 - ProfiLux LED 320/DMX/02 (50717)
 - ProfiLux E 100 (56898)
 - ProfiLux E 101 (56133)
 - LunAqua 10 halogen (54037)
 - ProfiLux LED 12V/01 (50367)
 - ProfiLux LED 24V/01 (50474)
 - LunAqua 10 LED/01 (50366)
- Packing unit 4

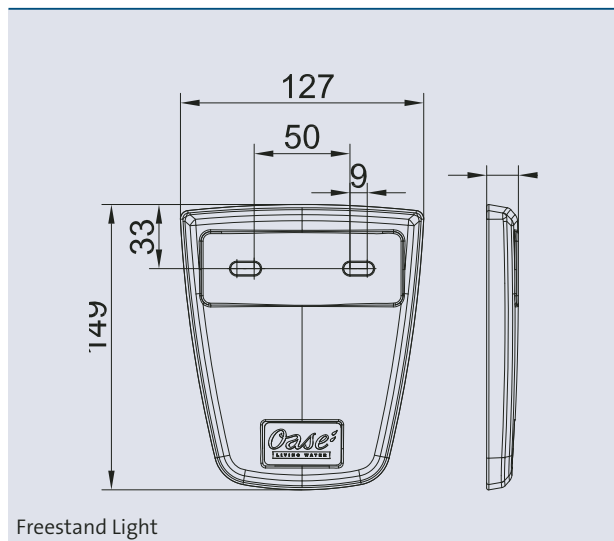
In the scope of delivery:

- Stand for lights
- 2 x screw M6x18
- 2 x screw nut M6

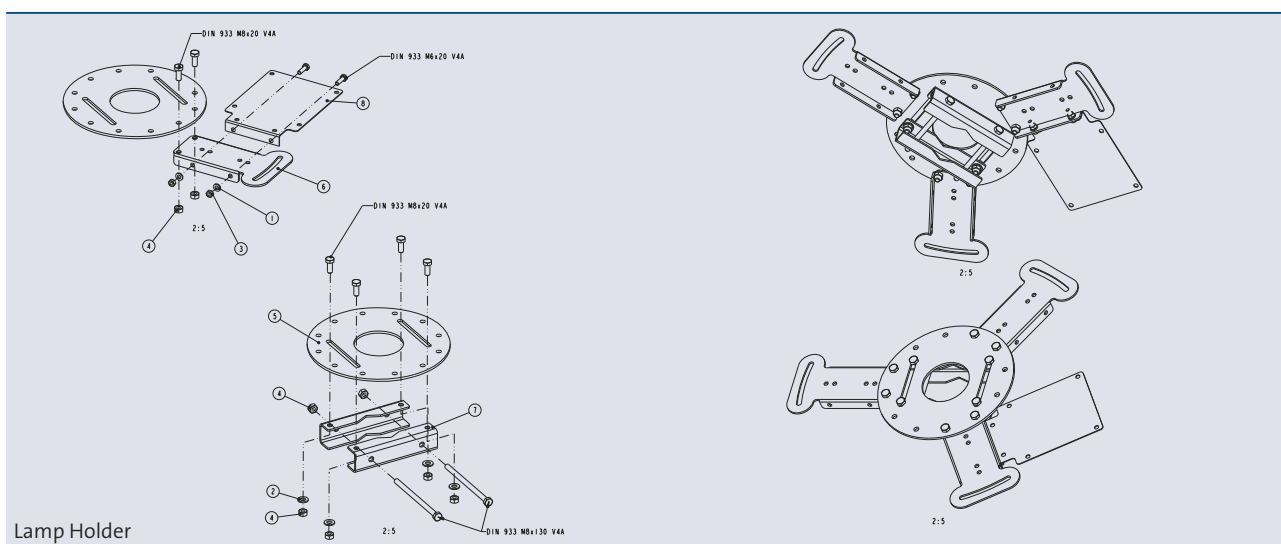




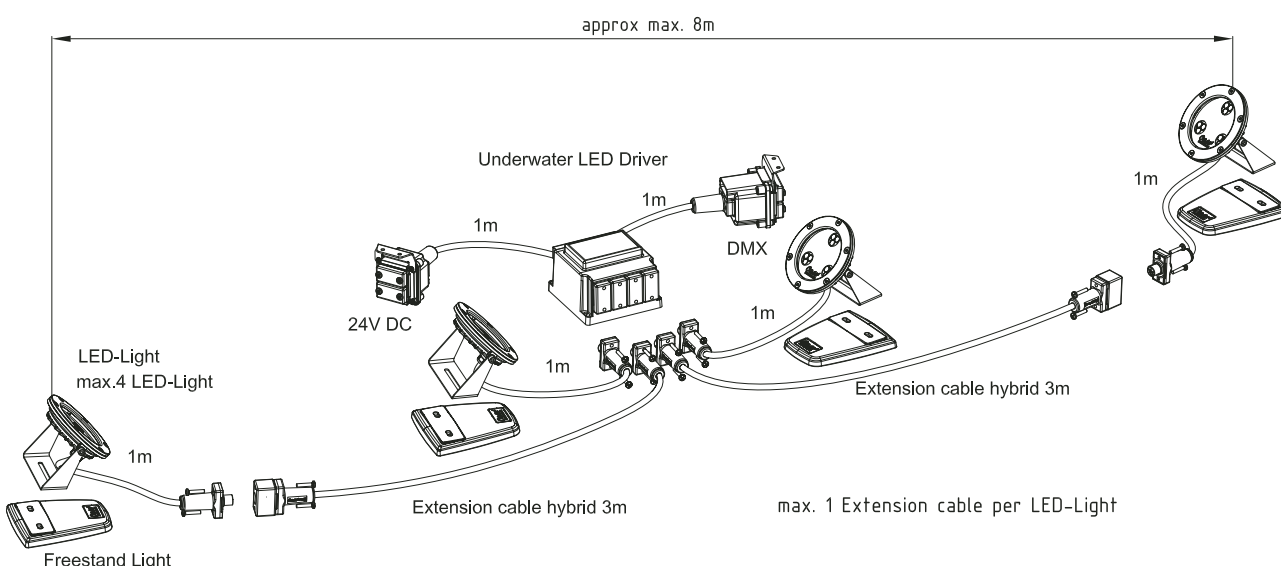
Lamp Holder



Freestand Light



Lamp Holder



Lamp Holder		
Dimensions (L x W x H)	[mm]	446 x 446 x 37
Material		Stainless steel
Weight	[kg]	3.4
Order no.		50786

Freestand Light		
Dimensions (L x W x H)	[mm]	149 x 127 x 17
Material		Stainless steel
Weight	[kg]	0.55
Order no.		50978

CITY FOUNTAINS

Location:

Nice –

Place Massena

OASE reference object, left

POWER

MEASURE – CONTROL – REGULATE



POWER – MEASURE – CONTROL – REGULATE

Precision-matched measurement, control and regulating technology from OASE are key essentials in display and programming fountains. There are some basic principles in this regard:

- For water features, fountains, and water show systems, it is important that pumps, throttle devices, filters, and water treatment systems operate in precise coordination.
- Electrical cables must be laid out in the pool, and they must be connected in such a manner that they are waterproof.
- If there is wind, the fountain height must be adapted to wind conditions, and the water level must always be compensated.
- When it gets dark, each fountain radiates with a fascinating brilliance produced by the use of underwater lights and the sophisticated play of colour.
- Sound, video, lasers, and pyrotechnics complete the fascinating water show effects.

Through the use of the easy control systems, programmable controllers or through the perfect combination of the ensemble comprising of all integrated components in an extensive network, the operator always has a full overview of system functions in any size and configuration.

The DMX/RDM technology opens up new possibilities. The DMX/RDM controller sends instructions to the products and receive information back, e.g. running time and electronic temperature. These status requests allow for remote diagnosis and remote maintenance which are the service concept of the future.

New in the catalogue:
WECS 1024
 (Water entertainment control system)
WECS 2048
 (Water entertainment control system)



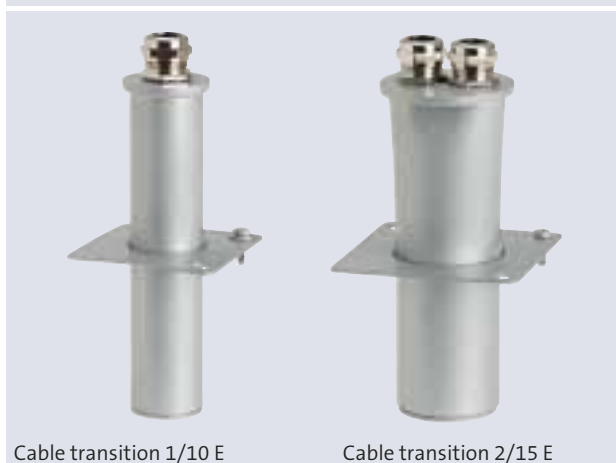
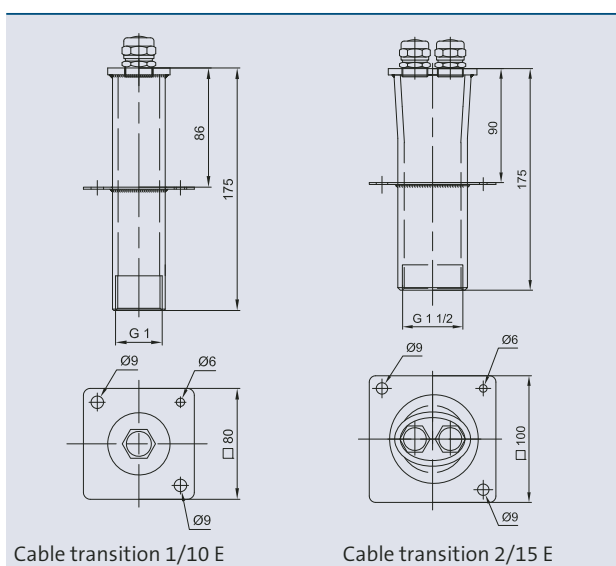
The OASE Easy Control can program your system from a PC or laptop.

• Cable transition armatures	page 114
• Underwater cable connectors	page 116
• Connection cable 12V AC/24 V DC	page 118
• Connection cable DMX	page 120
• Extension cable hybrid	page 120
• Electrical control systems	page 124
• Easy Control	page 126
• WECS 1024 and 2048	page 128
• Water level regulators	page 132
• Solenoid valves	page 132
• Water level sensors	page 134
• Wind level fountain controller	page 136
• Command Center	page 138



Cable transition	Fresh Water	Pool Water	Sea Water

CABLE TRANSITION KD 1/10 E AND KD 2/15 E CABLE TRANSITION KD 4/70 T, KD 7/100 T AND KD 12/100T

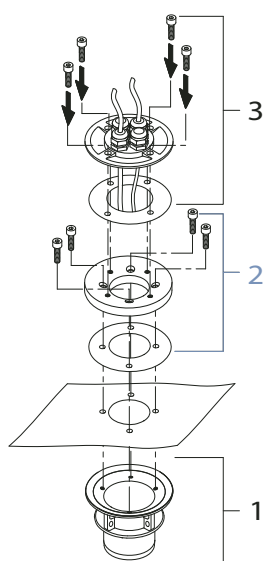


Electrical cables are routed under the water surface in all types of pools via cable transition armatures, in a manner that keeps cable transitions waterproof and invisible.

Product characteristics at a glance

- Elegant and professional connection to cable protection pipes
- Water-tight cable transitions through concrete basins
- Some units are suitable for liner
- Plug connection for connecting to the KG channel pipe or ED house installation pipe

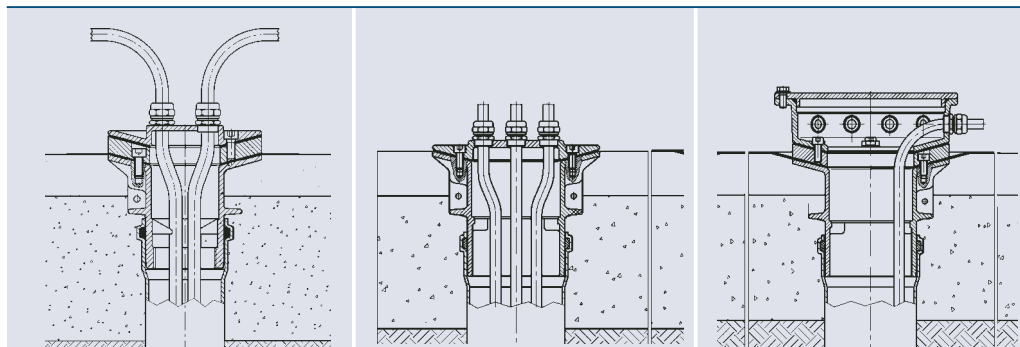
Cable transition		1/10 E	2/15 E
Dimensions (W x H)	[mm]	80 x 175	100 x 175
Number of cable connections		1	2
Suitable for cable diameter	[mm]	7 – 14	7 – 14
Connections	[inch]	1	1½
Material		stainless steel V4A	
Weight	[kg]	0.6	0.9
Order no.		51741	51740



1 The concrete part is the basis of every configuration. Available for DN 70 and/or DN 100 pipes.

2 The clamping flange for fastening with or without liner. Products without cable transitions are listed on page 184 ff.

3 Depending on the requirement a decision is made at this point concerning the specific implementation: Plug, sieve, overflow or level regulator.



3	Cable transition 4/70 T	Cable transition 7/100 T	Cable transition 12/100 T
Dimensions (ø x H) [mm]	150x50	190x50	230x70
Designation	cable transition	cable transition	cable transition
Number of cable connections	4	7	12
DN	70	100	100
Material	tombac	tombac	tombac
Weight [kg]	1.1	1.9	5.5
Order no.	57470	57464	57465

2 (optional)	Liner clamping flange 70 T KD	Liner clamping flange 100 T KD
Dimensions (ø x H) [mm]	150x25	190x40
Designation	liner clamping flange KD	liner clamping flange KD
DN	70	100
Material	tombac	tombac
Weight [kg]	2.0	2.9
Order no.	57473	57474

1	Concrete part 70 T	Concrete part 100 T
Dimensions (ø x H) [mm]	70x110	100x141
Designation	concrete part	concrete part
DN [mm] / [inch]	70 / 2"	100
Material	tombac	tombac
Weight [kg]	2.1	3.2
Order no.	57471	57467

Please follow the international and local norm



	Fresh Water	Pool Water	Sea Water	220-240 V	400 V	110-120 V	50 Hz	60 Hz	12 V AC
Underwater cable connector									
Junction Box									

UNDERWATER CABLE CONNECTOR T 3 AND JUNCTION BOX 8/M20 AND 14/M20

OASE underwater cable connectors are used for connecting and separating elements for electrical consumers, such as underwater pumps, or underwater spotlights, in all areas of water technology.

They enable trouble-free connection and disconnection of consumers from supply lines. Separation is necessary for example if the consumer must be removed for service purposes. With OASE underwater cable connectors, usually connecting and disconnecting is possible without draining the water.

All types have a transparent lid. Several blind plugs are supplied with each underwater cable connector to seal unused cable glands.

Product characteristics at a glance

- A solution that has proven itself in practice
- For small, medium-sized, and larger consumers
- With transparent lid for checking
- Corrosion resistant



Underwater cable connector T 3

Cable connectors are connecting and separating elements for electrical consumers in all areas of water technology. Consumers can be conveniently connected and disconnected – and thanks to OASE – even without draining the water!

The new junction box is a revolution in the field of underwater cable connectors: It is easy to install and offers many combination possibilities.

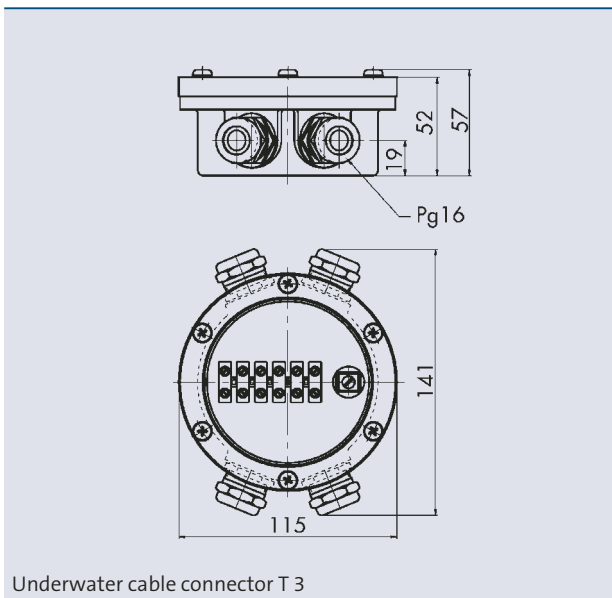
The junction box is available in 2 standard versions: The junction box 8/M20 contains 8 and the 14/M20 comes with 14 pieces of M20 cable glands.

Product characteristics at a glance

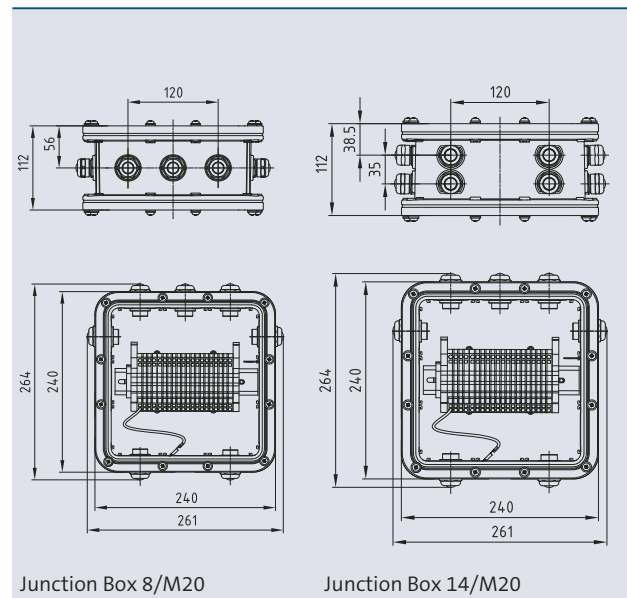
- 8 or 14 cable glands
- Easy service



Junction Box 8/M20 and 14/M20



Underwater cable connector T 3



Junction Box 8/M20

Junction Box 14/M20

Junction Box	Underwater cable connector	8/M 20	14/M 20
Dimensions (L x W xH) [mm]	(\emptyset x H) 115 x 57	264 x 261 x 112	264 x 261 x 112
Protection class	IP 68	IP 68	IP 68
Number of cable glands	4	8 x M20	14 x M20
Suitable for cable diameter [mm]	7 – 14	6 – 13	6 – 13
Number of terminals	5	16 (4 mm ²)	18 (4 mm ²)
Number of PE terminals	1	5 (4 mm ²)	6 (4 mm ²)
Material	tombac	PET-GF45 / Makrolon	PET-GF45 / Makrolon
Weight [kg]	1.2	3.4	3.9
Order no.	51334	57486	50358

Please follow the international and local norm



	Fresh Water	Pool Water	Sea Water	220-240 V	400 V	110-120 V	50 Hz	60 Hz	12 V AC	24 V DC	DMX	DMX/RDM	Plug and Spray
Connection cable 12V AC	✓	✓	✓	✓	✓	✓	✓	✓	✓	✓	✓	✓	✓
Connection cable 24V DC	✓	✓	✓	✓	✓	✓	✓	✓	✓	✓	✓	✓	✓

CONNECTION CABLE 12V AC AND 24V DC

OASE connection cables 12 V AC/01 and 24 V DC/01 are designed specially for underwater applications.

The unique connection sockets are IP 68 rated. The gaskets are integrated in the plugs.

Product characteristics at a glance

- female / female connections
- IP 68 rated



Connection cable 12V AC

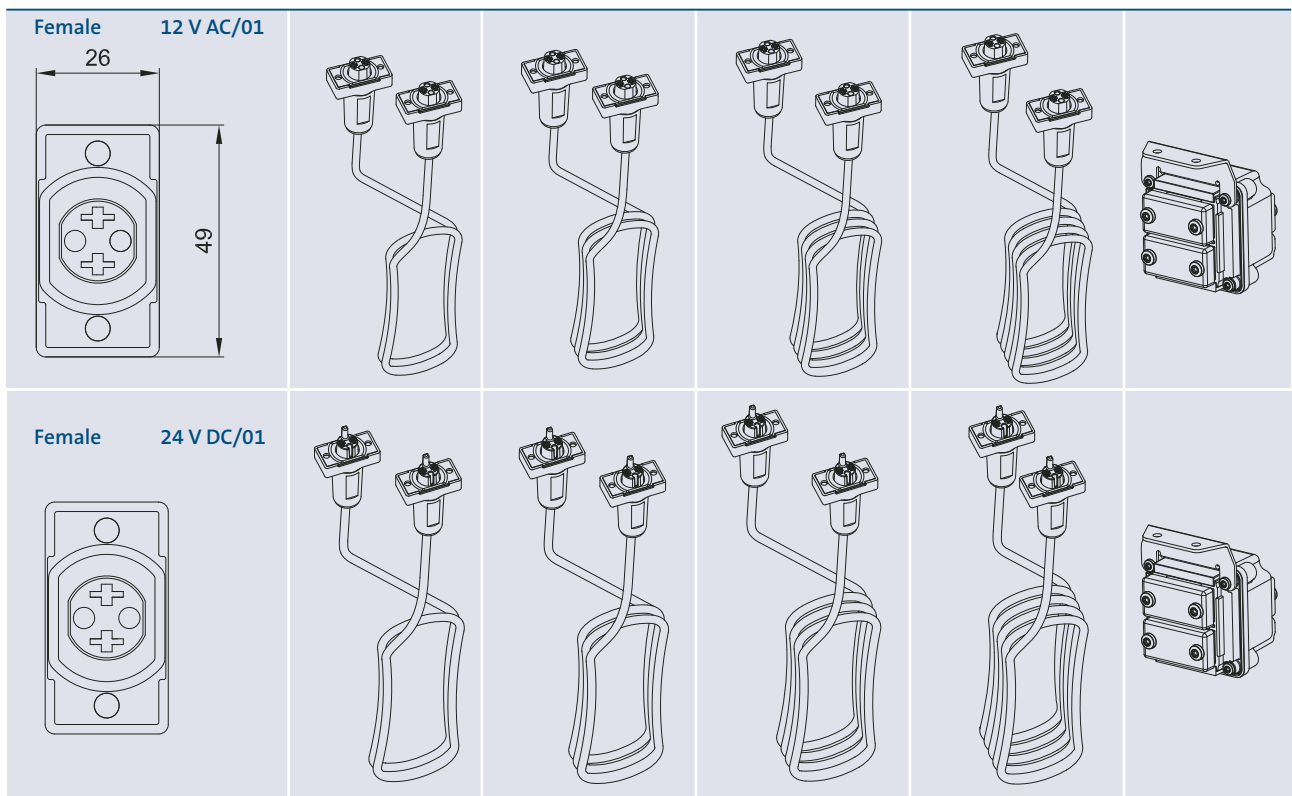


Connection cable 24V DC



Accessories (must be ordered separately)

Service Pack	Order no.
Service Pack 12 V AC / 01	12808
Service Pack 24 V DC / 01	12810



Connection Cable 12 V AC/01	1.0 m	3.0 m	7.5 m	15.0 m	Power Box 12 V
Length [m]	1.0	3.0	7.5	15.0	
Diameter (ø) [mm]	2 x 2.5 ²	2 x 2.5 ²	2 x 2.5 ²	2 x 2.5 ²	
Weight [kg]	0.2	0.4	1.4	2.6	0.47
Order no.	12768	12374	12375	11740	50492
Connection cable 24 V DC/01	1.0 m	3.0 m	7.5 m	15.0 m	Power Box 24 V
Length [m]	1.0	3.0	7.5	15.0	
Diameter (ø) [mm]	2 x 2.5 ²	2 x 2.5 ²	2 x 2.5 ²	2 x 2.5 ²	
Weight [kg]	0.2	0.4	1.4	2.6	0.47
Order no.	12762	12552	12553	11720	50493



	Fresh Water	Pool Water	Sea Water	220-240 V	400 V	110-120 V	50 Hz	60 Hz	12 V AC	24 V DC	DMX	DMX/RDM	Plug and Spray
Connection cable DMX	✓	✓	✓	✓	✓	✓	✓	✓	✓	✓	✓	✓	✓
Extension cable hybrid	✓	✓	✓	✓	✓	✓	✓	✓	✓	✓	✓	✓	✓

CONNECTION CABLE DMX

OASE connection cable DMX/01 cables are designed specially for underwater applications.

The unique connection sockets based on XLR standards (5-pole) are IP 68 rated. The gaskets are integrated in the plugs.

Product characteristics at a glance

- female / male connections
- IP 68 rated
- 2-core shielded



Connection cable DMX

EXTENSION CABLE HYBRID 3.0 M

OASE Extension cable hybrid is also designed for underwater applications.

These Extension cable hybrid(Data+Power) is for:

- ProfiLux LED 320/DMX/02 (50717)
- ProfiRing LED 320/DMX/02 (50718)
- ProfiPlane LED 320/DMX/02 (50719)

Only one extension can be used per LED unit.

Product characteristics at a glance

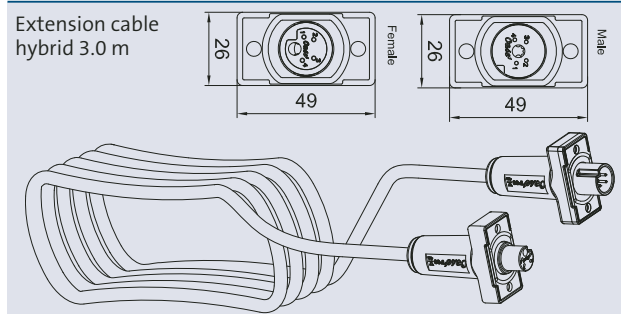
- Extension cable hybrid 3m long with connector
- female / male connections
- IP 68 rated
- 4-core shielded

In the scope of delivery:

- 4 x screw M5
- 1 x cable
- 1 x connector



Extension cable hybrid 3.0 m



Extension cable hybrid / 3,0m / 01		
Length	[m]	3
Diameter (ø)	[mm]	4 x 0,34²
Weight	[kg]	0.38
Order no.		50728

Accessories (must be ordered separately)

Service Pack	Order no.
Service Pack DMX / 01	12807

		1.0 m	3.0 m	5.0 m	10.0 m	20.0 m	End Resistant for
							Bus-System DMX/01
Length	[m]	1.0	3.0	5.0	10.0	20.0	—
Diameter (ø)	[mm]	2 x 0.34²	2 x 0.34²	2 x 0.34²	2 x 0.34²	2 x 0.34²	—
Weight	[kg]	0.2	0.4	0.7	1.8	3.3	0.1
Order no.		12368	12369	12371	12372	12373	12007



	Fresh Water	Pool Water	Sea Water	220-240 V	400 V	110-120 V	50 Hz	60 Hz	12 V AC	24 V DC	DMX	DMX/RDM	Plug and Spray
Underwater power supply	✓	✓	✓	✓	✓	✓	✓	✓	✓	✓	✓	✓	✓
Transformer UST 150/01	✓	✓	✓	✓	✓	✓	✓	✓	✓	✓	✓	✓	✓
Transformer UST 150/A/01	✓	✓	✓	✓	✓	✓	✓	✓	✓	✓	✓	✓	✓

UNDERWATER POWER SUPPLY 250 24V/01 AND UNDERWATER TRANSFORMER UST 150/01, 150/A/01

The Underwater Power Supply and the underwater transformer have the protection class IP 68 and are equipped with 4 slots.

Through this special connection technology, wiring by hand is no longer necessary.

Product characteristics at a glance

- 24V DC Power Supply for underwater
- Fixing by 4 screw possible
- 4 x female 24 V DC OASE connector
- IP 68 rated

Product characteristics at a glance

- 12V AC Power Supply for underwater
- Fixing by 4 screw possible
- 4 x female 12 V AC OASE connector
- IP 68 rated

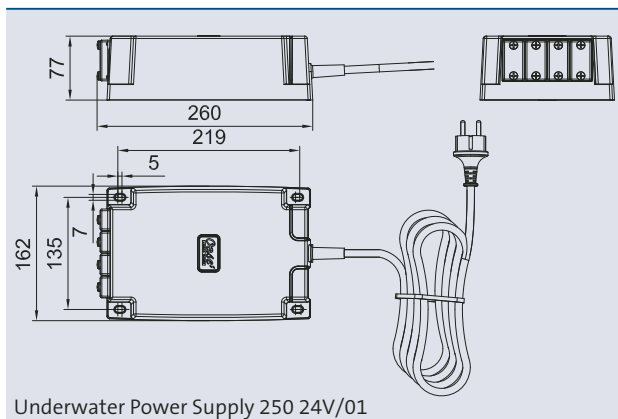
INNOVATION – MADE BY OASE



Underwater Power Supply 250 24V/01



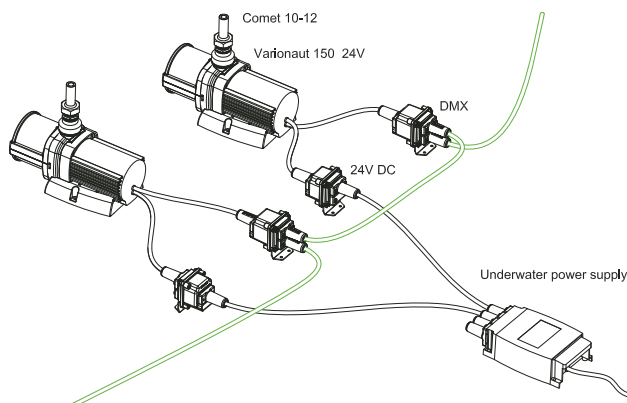
Underwater transformer UST 150/01 and 150/A/01



Underwater Power Supply 250 24V/01

One Underwater Power Supply 250 24V/01 can be connected with max. 2 x Varionaut 150/24V or max. 4 x Varionaut 90/24V or max. 4 x Underwater LED Control with 4 x ProfiPlane LED 320/DMX/02, ProfiRing LED 320/DMX/02 or ProfiLux LED 320/DMX/02 (=max. 16).

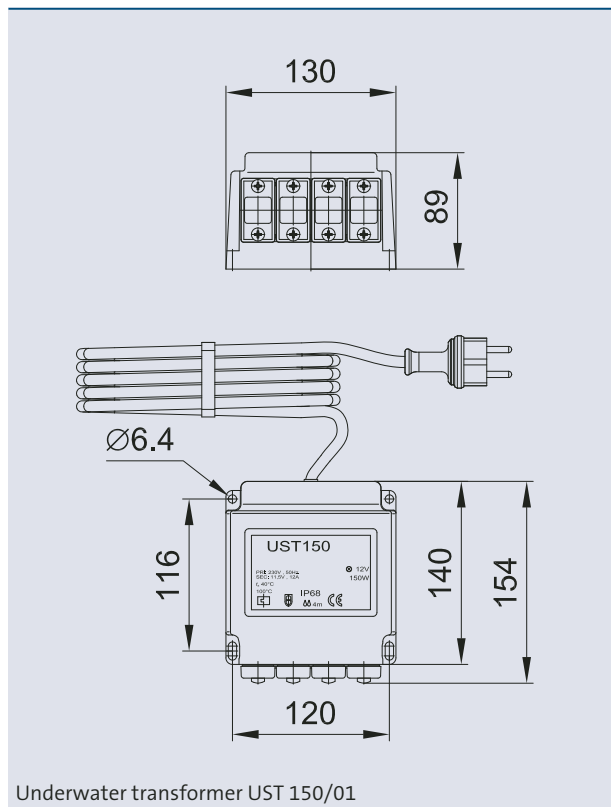
This Underwater Power Supply is also for the LED Modul II 960 (see on page 18), the MDD II and ProfiLux 370 LED (see on page 100).



Additional informations are available on the internet www.oase-livingwater.com

Underwater Power Supply 250 24V/01		
Dimensions(L x W x H)	[mm]	260 x 162 x 77
Nominal input voltage	[V/AC]	100-240
Nominal input frequency	[Hz]	50/60
Secondary voltage	[V/DC]	24
Secondary current	[A]	10,5
Efficiency	[%]	≥90
Stand by power consumption	[W]	≤1
Environmental conditions: submersible application	Water temperature: min 4°C to max. 35°C	
Environmental conditions: dry application	Ambient temperature: max 30°C with natural convection, no direct sun exposure permitted	
Slot S	[V/DC]	4 x 24
Immersion depth max.	[m]	4
Protection class		IP 68
Cable length	[m]	10
Weight	[kg]	5,5
Order no.		50733

Please follow the international and local norm



Underwater transformer UST 150/01



Underwater transformer	UST 150/01		150/A/01	
<ul style="list-style-type: none"> • 4 couplings • Connection of 4 x 35 Watt, 3 x 50 Watt or 2 x 75 Watt halogen spotlights • Connection of 4 x 10 Watt LunAqua 10 LED • Connection of 8 x ProfiLux LED 12V/01 with 4 power boxes 				
Dimensions (L x W x H)	[mm]	154x130x89	[inch]	6x5.1x3.5
Primary voltage	[V/Hz]	230/50	[V/Hz]	120/60
Secondary voltage	[V]	12	[V]	12
Consumption	[VA]	150	[VA]	150
Cable length	[m]	10	[ft]	20
Weight	[kg]	4.5	[lbs]	9.9
Order no.		50401		50517

Example drawings on page 103

Please follow the international and local norm



	220-240 V	400 V	110-120 V	50 Hz	60 Hz	12 V AC	24 V DC
Switchgear							

ELECTRICAL SWITCHGEAR IN STANDARD AND SPECIAL DESIGN

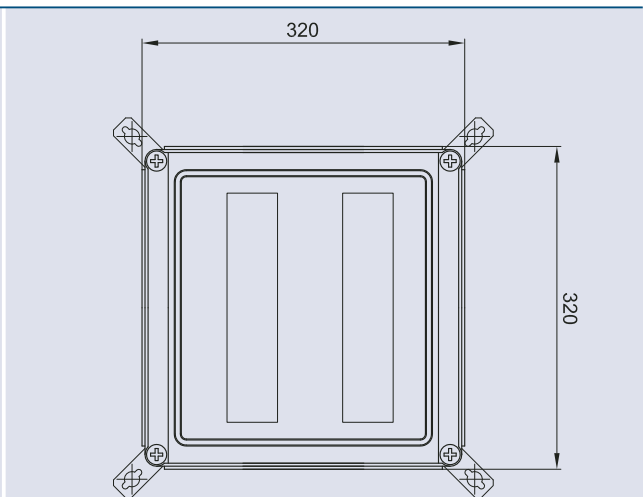
OASE switchgear and control centres for spray fountain or fountain installations are manufactured with the latest technology. They satisfy the VDE guidelines in all points and are equipped with all required protection and safety fixtures.

Product characteristics at a glance

- Especially suitable for public systems
- Equipped with all required protection and safety fixtures
- Wired ready-to-connect
- Special solutions are manufactured on customer request



Switchgear



Switchgear

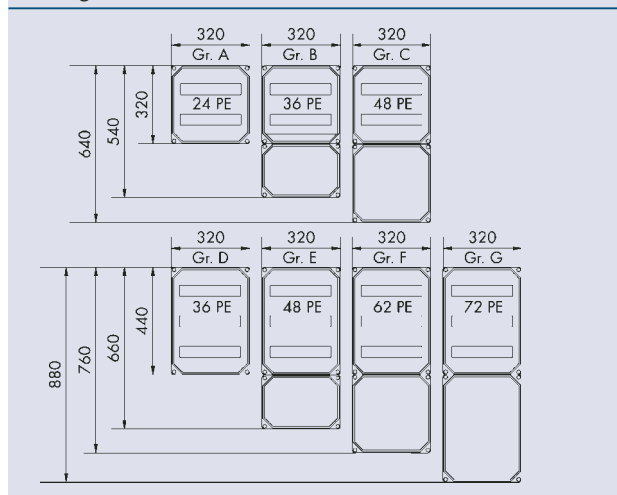


A residual current protection switch cuts the system off immediately if nominal residual current greater than 30 mA is detected, so that complete safety is always ensured for people, animals and equipment. Safety cut-outs protect individual components in the event of overload and short-circuit. Special motor circuit breakers with 3-phase protection avoid the motor in the event of overload and running in 2-phases. Depending on the requirements and customer desires switchgear systems can be fitted with special start-up processes such as star-delta starting or soft start-up to ensure safe start-up of the motors.

Pump, lighting, and water level regulator can be switched on or off automatically or manually with the manual-0-automatic switch in conjunction with 2-channel timers.



Switchgear



The standard models offer suitable switchgear for a variety of applications. In addition OASE manufactures the perfect switchgear with all required additional fixtures for all conceivable customer requirements.

Switchgear	EL 100 W	EL 101 W	EL 110 W	EL 111 W
Dimensions (LxWxH) [mm]	320x320x200	320x320x200	320x320x200	320x320x200
Protection class	IP 55	IP 55	IP 55	IP 55
Input voltage [V/Hz]	1 x 230/50	1 x 230/50	1 x 230/50	1 x 230/50
Residual current protection switch [A]	25/0.03	25/0.03	25/0.03	25/0.03
Timer, Number of programs	2	2	2	2
Output voltage pumps [V]	1x 230	1x 230	1x 230	1x 230
Output power pumps [kW]	1x 0.55	1x 0.55	1x 0.55	1x 0.55
Type of motor start-up	direct	direct	direct	direct
Motor protection switch	no	no	no	no
Output voltage illumination [V/AC]	none	none	1x230	1x 230
Output power illumination [kW]	none	none	1x0,30	1x 0,30
Output voltage water-level regulator [V/DC]	none	24	none	24
Output voltage water-level regulator [W]	none	1x 15	none	1x 15
Number of M-0-A switches	1	2	2	3
Number of indicator lights	1	2	2	3
Weight [kg]	6.0	6.2	6.2	6.8
Order no.	51341	51342	51343	51344



	220-240 V	400 V	110-120 V	50 Hz	60 Hz	12 V AC	24 V DC	DMX	DMX/RDM	Plug and Spray
Easy Control										

EASY CONTROL – FOR YOUR INDEPENDENCE!

With the OASE Easy Control you can easily program your system from a PC or laptop – on a well-organised user interface, with freely programmable sequential programs of up to 256 programmable channels, and everything is transmitted simply via USB – a convincing concept!

The device is quite simple to operate: The interface module is connected to a laptop or PC via USB connectors, the software is installed, and you are ready to program. Thanks to the well-organised and clearly structured user interface you can create sequential programs without programming skills. The interface module has 256 channels that can be controlled individually. Signals are transmitted via DMX-512.



Easy Control

Product characteristics at a glance

- Simple programming from PC or laptop
- Signal transmission via USB
- Freely programmable sequential
- Up to 256 channels can be programmed in stand alone operation

Scope of delivery:

- USB cable
- Power Supply Unit



PC not in the scope of delivery

DMX IN DETAIL: INFORMATION ON THE TRANSMISSION PROTOCOL

The transmission protocol for our components (e.g. Jumping Jet, Varionaut etc.) is sent via a serial bus system (in accordance with the industrial protocol RS 485).

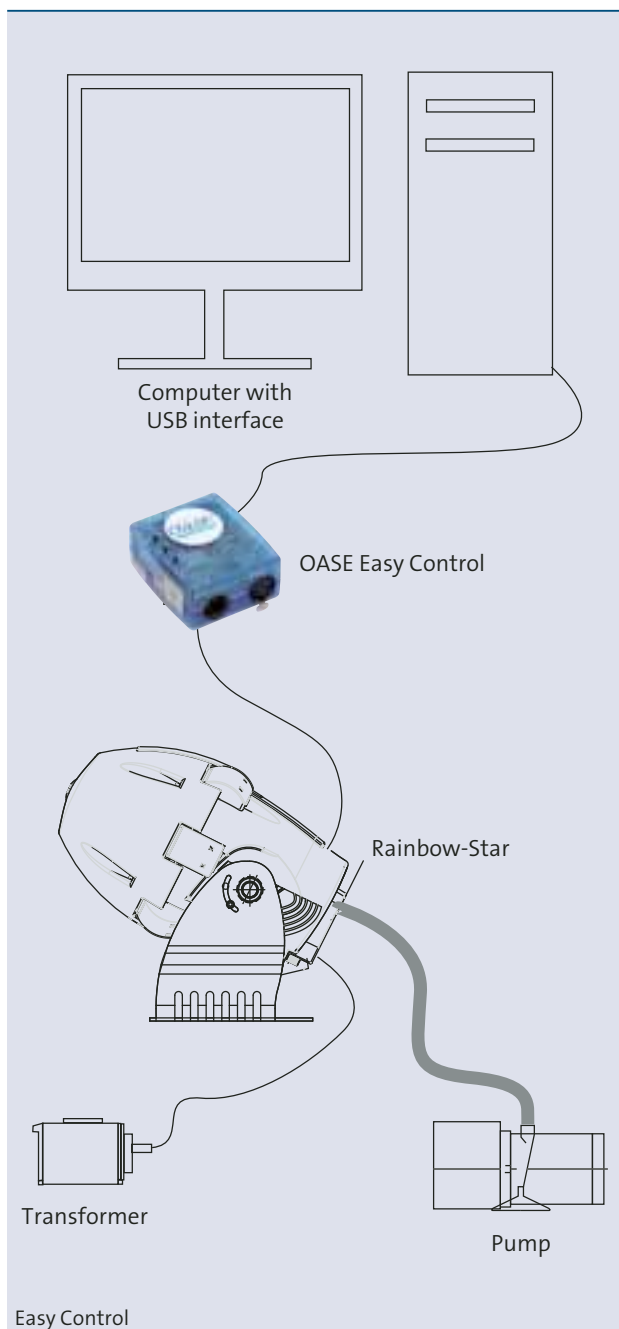
The protocol is based on DMX-512 or DMX-512/1990 and originally comes from the application area of stage and show technology. DMX means Digital MultipleXed.

DMX-512 is an accord concerning the connection between control device (transmitters, such as OASE DMX Easy Control or OASE WECS (Water Entertainment Control System)), and receivers (such as Jumping Jet, Varionaut, dimmer pack, scanners, etc.)

The data network is structured as a bus topology (daisy chain). The advantage of this structure is that you only need one data line to activate the components (spotlights, Jumping Jet, etc.) because you simply loop the DMX line through from device to device. With DMX-512 up to 512 different information signals can be transferred over one DMX line. A maximum of 32 devices (receivers) can be connected to one DMX line

Attention: To ensure correct signal transmission the DMX line should not exceed a length of 100 m and end with DMX resistant.

DMX-capable devices are equipped with standardised 5-pole XLR connectors.



Easy Control				
Dimensions (L x W x H)	[mm]	100 x 80 x 45	[ft]	0.33 x 0.26 x 0.15
Compatibility		DMX-512 / 1990		DMX-512 / 1990
Channels		256 (transmit mode on the PC) 256 (stand-alone mode)		
Connection PC		USB 2.0		USB 2.0
Connection bus system		XLR 5-pin male/female		XLR 5-pin male/female
Supply voltage	[V]	5 per USB	[V]	5 per USB
Operating System		Windows XP, Vista, Win 7		Windows XP, Vista, Win 7
Weight	[kg]	0.2	[lbs]	0.44
Order no.		50289		50175



	220-240 V	400 V	110-120 V	50 Hz	60 Hz	12 V AC	24 V DC	DMX	DMX/ RDM	Plug and Spray
WECS 1024	✓	✓	✓	✓	✓	✓	✓	✓	✓	✓
WECS 2048	✓	✓	✓	✓	✓	✓	✓	✓	✓	✓

WATER ENTERTAINMENT CONTROL SYSTEM WECS 1024 AND 2048

These are DMX Controller for up to 1024 or 2048 channels and RDM suitable. The DMX/RDM technology opens new possibilities.

Product characteristics at a glance

- Controller for up to 1024 Channels
- Suitable for standard and musical fountains
- RDM ready
- Including a time and calendar function
- Can be mounted into control cabinets direct on DIN-rails
- Musical fountain together with PC*

The controller send a RDM-data packages to components and the participants analyse the data and sends answers on the same line e.g. running time and temperature. These status requests require remote diagnosis and remote maintenance which are the service concepts of the future.

Product characteristics at a glance

- For big Multimedia installations
- For Stand-alone-operation
- Controls big installations music synchronal
- RDM capable: RDM capable terminals are tied into shows very easily and can be configured and supervised
- Software available also for PC (Programming environment)
- Show installation and component test by W-Lan
- Ordering in addition real time 3D simulation



WECS 1024

* PC is not included in content of delivery



WECS 2048

WECS 1024 Product Specification	
Ethernet/DMX Interface	
2 x 512 DMX channels (RDM Ready)	
Stand alone capable: plays stored shows	
Power supply via mains circuit (12/24V, AC/DC) or power-over-Ethernet	
Access 1 x RJ 45 (Ethernet - e-net) DMX 512 access 2 x RJ 45 , 2x clamp terminals	
Serial interface input RS 232	
Changeable intern micro SD memory card	
7-Segment LED display	
Real time clock	
Aluminium housing	
DIN rail capable	
Dimensions (LxWxH): 175 x 60 x 75 mm	
Weight: 0,4 kg	
Colour: silver / red	
In the scope of delivery:	
Hardware (see picture)	
System documentation,	
Software Programmer Enterprise on CD, with media player for audio and video*	
OASE Scheduler	
SD card inclosed	
Dongle for licence protection	
Order no.	50596

* PC is not included in content of delivery *1

*2

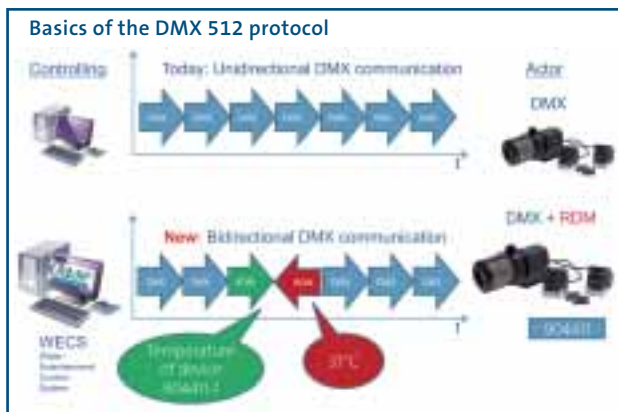
Following requirements of the PC should be fulfilled for WECS1024 applications:

- Windows Vista Professional (English Version) or Windows 7 Professional (English Version)
- Microsoft .Net Framework 3.5 (for Oase Scheduler)
- Intel Pentium 4 or later
- 2048 MB RAM
- 1024 x 768 Screen resolution or better
- Minimum 2 USB Ports (Mouse and Dongle)
- Audio output
- Ethernet Port (100MBit)
- Option: Second Ethernet Port (100MBit) for Remote Service Access

Water Entertainment Control System 2048	
WECS 2048 server (19" PC 2,5 GHz dualCore 2GB Ram XP-Embedded)	
PC housing: 19 Zoll 3 HE front colour black/blue	
PC Power Supply: 110/230 V AC	
Mainboard Gigabyte G31M-ES2L	
Graphic adapter card	
Solid state drive 60 GB or higher	
19" wide-Screen TFT monitor	
Junction box with 4 x RDM/DMX-Output XLR 5 pin male/female,	
4 x RDM/DMX-Input XLR 5 pin male/female,	
2 x symmetrical audio outputs and 1 x audio output	
Keyboard with touchpad	
© WECS2048 Software	
Dimensions (L x W x H): 1000 x 750 x 400 mm	
Weight: 30 kg	
In the scope of delivery:	
Hardware (see at the picture)	
System Documentation	
Order no.	50597



The DMX-Technology make fountain effects possible; Variation of the water pattern, RGB colour changes, multidirectional movements of interactive fountains.



The DMX-Bus now is bidirectional. This is possible because of the protocol expansion RDM (Remote Device Management).

The connecting technique stays unchanged! Both existing connection (Pin 2 and 3) at the established XLR-plugs are being used.



The new RDM/DMX Technology operate as follow: The WECS-Controller will send permanently DMX – data flow. It is paused for a short moment then one RDM-data package will be sent directly to a component. The participant analyses the data and sends an answer on the same line (Graphic DMX/RDM). The targeted requesting (polling) avoids that multiple participants are sending at the same time. The protocol expansion has no effect on participants without RDM.

The controller basically gets a reply for all RDM-based data packages while ...

...Addressing participants

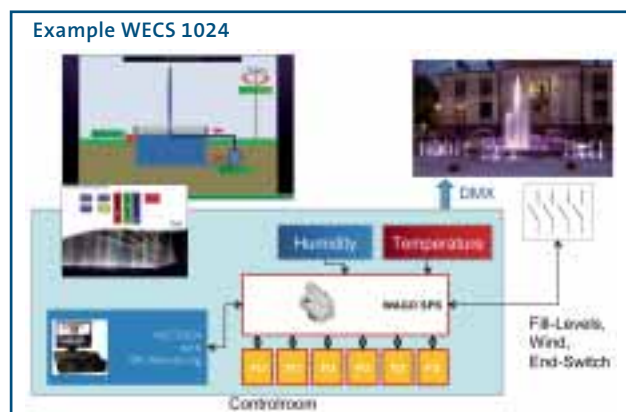
...Configuration

...Status request

...Malfunction request

...Doing software updates or parameter adjustings

With this new Technology, an automatic address placing is possible. It simplifies the implementation and the error search and lower costs in the After-Sales-section. Status requests are also possible (Malfunction protocol, work hours counter, temperature, etc.).



OASE WATER ENTERTAINMENT CONTROL SYSTEM (WECS)



		Easy Control	WECS 1024	WECS 2048
Hardware	DMX Output RDM Input Connection to PC	1 half Universe (256 DMX Channels) – Digital Inputs: 8 USB	2 Universe (2 x 512 DMX Channels) Yes. (Not in Stand Alone) Digital Input: 8 Ethernet 100MBit	4 Universe (4 x 512 DMX Channels) Yes – PCI, Card built-in 19" Rack PC with Windowx XP Embedded 19" WS-Monitor + Keyboard + Mouse Junction box for DMX and Audio Output WECS 2048 console terminal (Optional)
Hardware	Stand Alone capable Stand Alone Memory Stand Alone Calendar	Yes Built In (64k) – –	Yes miniSD-Card (1GB) Yes. Clock built in. Infrared Remote Control (Optional)	– – – –
Computer	Hardware Operating System	Laptop or Desktop PC Windows XP, Vista ,7 (32/64-Bit)	Laptop, Desktop PC or Embedded PC Windows, Vista, Windows 7 (32/64-Bit)	Included in hardware delivery content
Connectivity	Input/Output	USB	USB Ethernet e:net (Butler Red, Butler XT, a.s.o.) Ethernet Art-Net (1 Universe) Ethernet Modbus UDP with Script Language Ethernet UDP Messaging Ethernet HTTP Midi-Timecode In/Out SMPTE-Timecode In RS232-Remote Control Audio-Out –	USB – Ethernet Art-Net Full Support Ethernet Modbus TCP/UDP Built-In Ethernet TCP/UDP Messaging – Midi-Timecode In/Out SMPTE-Timecode Out RS232-Remote Control Audio-Out Connection for Faderunit
Software	Fixture Library Patching Parameter Curves Cues Sequences Media Support FX Effects Scripts/Macros Scheduler Special Water Effects Operating and Monitoring	– – – Yes – – – – – –	Yes Yes MinMax- Values Only Merging HTTP Yes Yes Yes (Audio + Video, not in Stand Alone) SINUS, RECT, WAVES and much more Good support for matrix programming Text output Bitmap Effects FX Templates Complex Scripting Language OASE Scheduler Dayplans and Yearplans – – – Editable User Interface (Action PAD) RDM-Monitor Logbook files DMX Channel Preview	Yes Yes Editable Curve Merging HTTP Yes Yes Yes (Audio + Video) SINUS, RECT, WAVES and much more Editable Effect waves Good support for matrix programming Text output Bitmap Effects FX Templates – Built In Scheduler Dayplans, Weekplans, Yearplans ACL (Function for Varioswitch) ACD (Automatic Channel Dimming) for fountain lights MDN-Controller (MDN Motion Control) Small User Interface (TechViewer) RDM-Monitor – DMX Channel Preview



	Fresh Water	Pool Water	Sea Water	220-240 V	400 V	110-120 V	50 Hz	60 Hz	12 V AC	24 V DC
Electronic water level control										
Solenoid valve										

ELECTRONIC WATER-LEVEL REGULATOR EWR 1, EWR 2 AND SOLENOID VALVES MV 0.5" 24V, MV 1" 24V

The EWR water-level regulator can be used for electronic water-level monitoring, and consequently for automatic top-up infeed of pool water, but it can also be used to switch off pump systems in the event of dry run.

Product characteristics at a glance

- Electronically monitoring of water level
- Automatic top-up infeed of pool water
- Automatic switch off of pump technology when using water-level sensors incl. dry-run protection electrode

OASE solenoid valves to top-up pool water are installed in the fresh water infeed line of a pool system or in a water reservoir.

Product characteristics at a glance

- For automatic regulation of the water level



Electronic water level control 1



Electronic water level control 2



Solenoid valve 1/2" 24 V

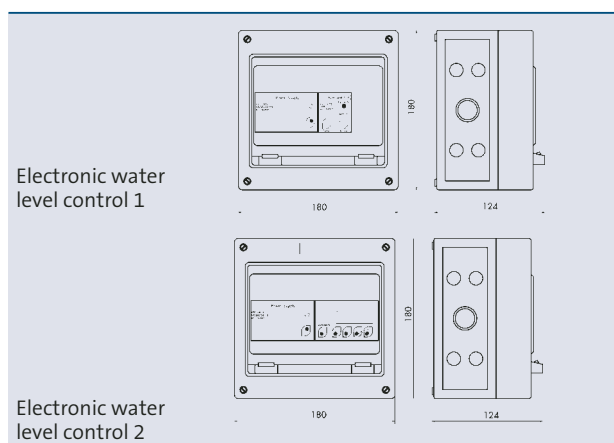


Solenoid valve 1" 24 V

The water-level control device essentially consists of an electronic water-level regulator, a water-level sensor, and a solenoid valve. Depending on the area of implementation individual components are available in different models.

In automatic mode, and if there is an empty pool, the solenoid valve in the fresh water in feed line opens and the water flows until it reaches the maximum electrode. As soon as the maximum electrode is reached a non-hazardous control current flows between the maximum electrode and the common electrode. This switches the solenoid valve off and water infeed is interrupted. If the water level drops to a level where the minimum electrode is no longer covered with water, the control current will be interrupted. The solenoid valve opens and allows water to flow until the water level has reached the maximum electrode and the control current flows again.

For greater reliability and safety there are only 24-Volt models.



		Electronic water level control 1	Electronic water level control 2
Dimensions (LxWxH)	[mm]	180 x 180 x 124	180 x 180 x 124
Housing		plastic	plastic
Protection class		IP 54	IP 54
Voltage	[V/Hz]	100-240/50-60	100-240/50-60
Output power			
Solenoid valve	[V/Hz]	230/50	230/50
	[A]	5.0	5.0
Solenoid valve	[V/DC]	24	24
	[A]	0.5	0.5
Pump	[V/Hz]	230/50	230/50
	[A]	5.0	5.0
Switch/Button		1	2
Indicator lights		1	1
Connections for electrodes		3	4
Dry-run protection		no	yes
Alarm monitoring		no	yes
Weight	[kg]	2.1	2.1
Order no.		51554	55846

		Solenoid valves ½" 24 V	Solenoid valves 1" 24 V
Dimensions (LxWxH)	[mm]	67 x 45 x 88	96 x 70 x 108
Function		normally closed	normally closed
Nominal diameter		½"	1"
Directions		2/2	2/2
Voltage	[V/DC]	24	24
Duty cycle		100 %	100 %
Protection class		IP 65	IP 65
Pressure range	[bar]	0.4 – 10	0.4 – 10
Material		brass	brass
Weight	[kg]	0.5	1.3
Order no.		51556	51557

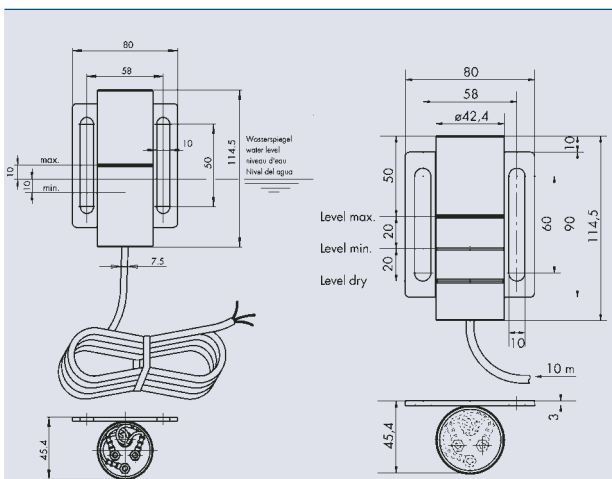


	Fresh Water	Pool Water	Sea Water	220-240 V	400 V	110-120 V	50 Hz	60 Hz	12 V AC	24 V DC	DMX	DMX/RDM	Plug and Spray
Water-Level Sensor													
Supplemental electrode													

WATER-LEVEL SENSORS 20-3, 20-4 AND 2000-3/5

OASE water-level sensors ensure reliable control of the water level and thus prevent the pool from overflowing.

The Water-Level Sensor 2000-3/5 is designed for greater level differences of approximately 50 to 2000 mm, such as occur in water reservoirs.

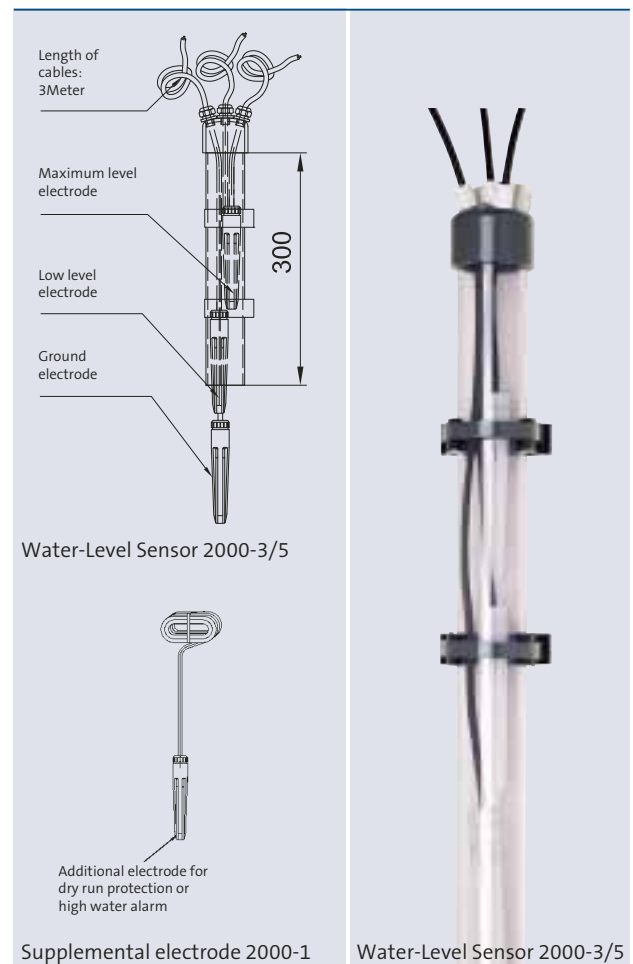


Water-Level Sensor 20-3

Water-Level Sensor 20-4



Water-Level Sensor 20-3



Water-Level Sensor 2000-3/5

Supplemental electrode 2000-1

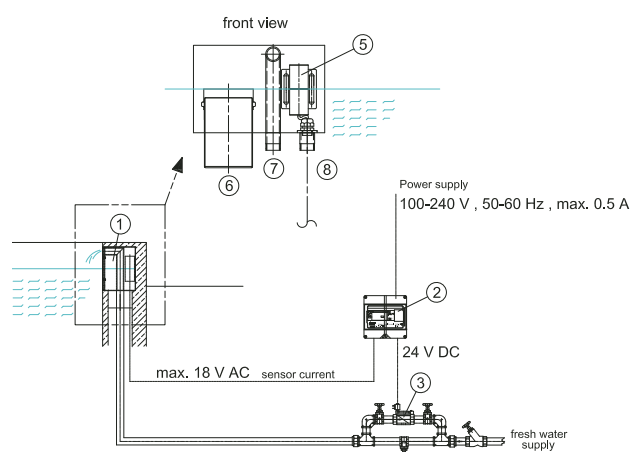
Water-Level Sensor 2000-3/5

The stainless steel housings of the Water-Level Sensor 20-3 and 20-4 also take on the function of the common electrode. The minimum and maximum electrodes are in the housing. The permanently set level difference is 20 mm. In addition the 20-4 has a dry-run protection electrode.

It can be retrofitted with a dry run protection electrode. The electrodes can be adjusted according to the level differences via the cable length. They give switch on and switch off commands to regulate the water level or to protect the pump technology (Supplemental electrode 2000-1).

Product characteristics at a glance

- For automatic infeed and top-up feed of freshwater if the water level drops
- With dry-run protection and alarm function
- Compensates different water levels
- Robust and reliable technology
- Safe operation



- ⊙ 51120 Overfl. wall-inst. comb. armature 100 E
- ⊙ 51554 Electronic water level control 1
- ⊙ 51557 Solenoid valve 1" 24 V
- ⊙ fresh water supply
- ⊙ 51559 Water level sensor WSS 20-3
- ⊙ overflow pipe
- ⊙ fresh water inlet in fountain pool
- ⊙ protective pipe for water level sensor cable

Accessories (must be ordered separately)

Electronic water level control 1 (see page 132)	51554
Electronic water level control 2 (see page 132)	55846
Solenoid valve ½ 24 V (see page 132)	51556
Solenoid valve 1 24 V (see page 132)	51557

		Water-Level Sensor 20-3	Water-Level Sensor 20-4
Dimensions (L x W x H)	[mm]	115 x 80 x 46	115 x 80 x 46
Housing		stainless steel	stainless steel
Protection class		IP 68	IP 68
Electrodes		3	4
Common		1	1
Minimum		1	1
Maximum		1	1
Dry-run		-	1
Level difference	[mm]	20	20
Cable length	[m]	10.0	10.0
Weight	[kg]	2.2	2.3
Order no.		51559	53918

		Water-Level Sensor 2000-3/5	Supplemental electrode 2000 -1
Dimensions (L x W x H)	[mm]	315 x 135 x 150	150 x 125 x 75
Housing		plastic	plastic
Protection class		IP 68	IP 68
Electrodes		3	1
Common		1	-
Minimum		1	-
Maximum		1	-
Dry-run		-	1
Level difference	[mm]	max. 2500	max. 2500
Cable length	[m]	3.0	3.0
Weight	[kg]	2.5	0.3
Order no.		55845	55843



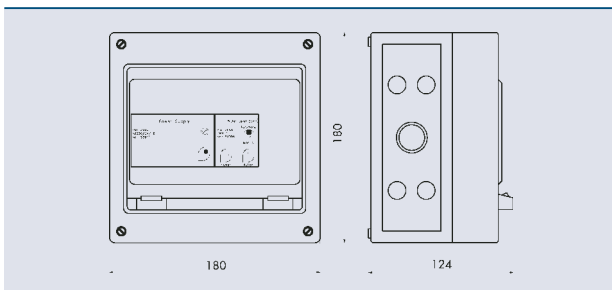
	220-240 V	400 V	110-120 V	50 Hz	60 Hz	12 V AC	24 V DC
Wind-dependent fountain control							
Anemometer							

WIND-DEPENDENT FOUNTAIN CONTROL AND ANEMOMETER

During stormy weather, fountains often have an inharmonious effect and normal fountain operation will get the surrounding area wet. Wind-level fountain controls can reduce the fountain height, or completely switch the system off, depending on weather conditions.

Product characteristics at a glance

- Wind-dependent switch-off in 3 stages
- Saves water and power costs
- Weather-dependent harmonious water pattern
- No irritated pedestrians
- Easy to install



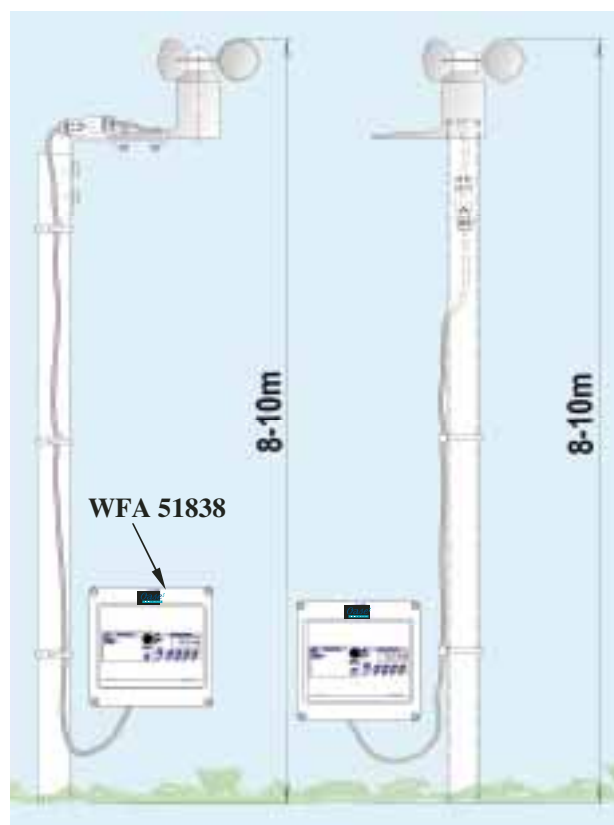
Wind-dependent fountain control 3K



Anemometer

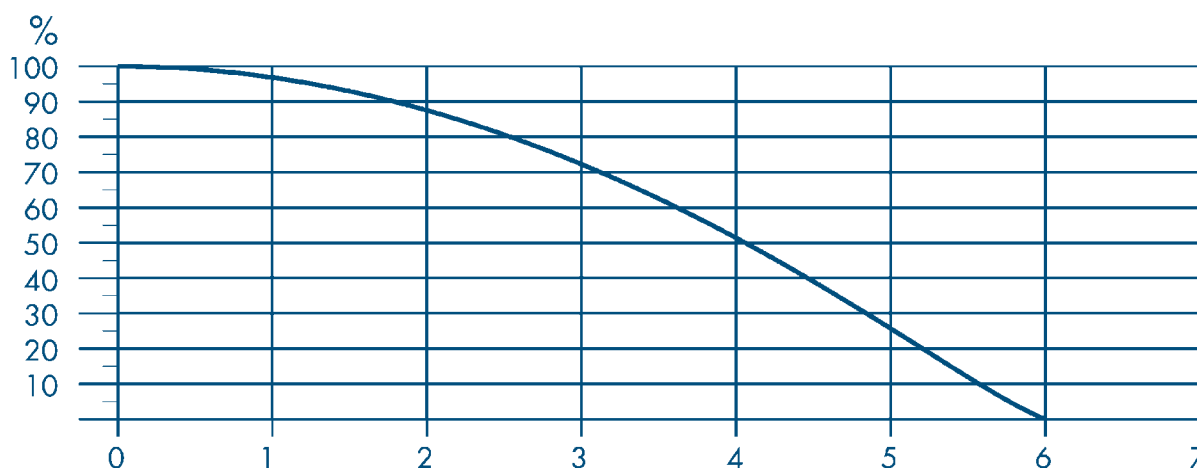
The Wind-dependent fountain control 3K control device directly switches off the pump at a certain preset wind level. If multiple pumps are operated that feed one fountain, they can be switched off one after the other. Or two bypass valves are opened depending on the wind and the pump is switched off only in the third step.

The control device is usually placed next to the control cabinet of the fountain system. The control cables of the pumps are routed out of the control cabinet and connected. Wind conditions on the anemometer and on the fountains should be identical if possible, consequently the anemometer should be slightly elevated and mounted on a mast or a roof in the vicinity of the fountain. The pulse lines of the anemometer should be shielded and routed to the control device via the shortest path possible.



Cable: starting from 20m cable length, please use screened cable

Possible fountain heights in %



Wind forces from 0 – 6 according to the Beaufort wind force scale

	Wind-dependent fountain control 3K	Anemometer K
Dimensions (L xW xH)	[mm] 180 x 180 x 124	145 x 104 x 93
Housing	plastic	plastic
Protection class	IP 54	IP 33
Voltage	[V / Hz] 230 / 50	24 V / DC
Switch/button	5	–
Indicator light	1	–
Control lines	3	–
Contact load	[A] 5	–
Weight	[kg] 2.2	0.8
Order no.	51838	53913



	Fresh Water	Pool Water	Sea Water	220-240 V	400 V	110-120 V	50 Hz	60 Hz	12 V AC	24 V DC	DMX	DMX/RDM	Plug and Spray
Command Center	✓	✓	✓	✓	✓	✓	✓	✓	✓	✓	✓	✓	✓

COMMAND CENTER 2 HP AND 5 HP 3-PHASE

OASE control panels are designed to power and control the 60Hz versions of MIDI II (2 HP) and MAXI II (5HP) floats.

Manufactured according to the NEC guidelines for protection and safety, the standard panels include:

- GFCI 5mA protection
- Safety circuit breakers to protect individual components in the event of overload and short-circuit
- Motor circuit breakers to protect the motor in the event of overload or phase failure

Product characteristics at a glance

- Prewired and ready to connect
- Compact IP66 NEMA 4 Enclosure
- Equipped with 2 channel timers for automatic switching of lights and pump



Command Center 2 HP / 5 HP / 3-phase



POWER

COMMAND CENTER



Command Center		2HP	5HP/3-phase
Dimensions (L x W x H)	[inch]	8.27 x 23.63 x 23.63	8.27 x 23.63 x 14.96
Protection class		IP66, NEMA 4	IP66, NEMA 4
Connection Voltage	[V/AC]	115	115/230
Frequency	[Hz]	60	60
Fault current GFCI	[mA]	5	5
Ambient temperature	[°C/°F]	0-40/32-104	0-40/32-104
Air humidity	[%]	Relative Humidity 10-95, not condensed	
Channel assignment, timer		Channel 1: pump motor, Channel 2: lighting system	
Breaking capacity	[V/AC;A]	115; 13	115; 13
Weight	[kg]	29	18.6
Order no.		50500	50502



WATER QUALITY

THE SAME PRINCIPLE APPLIES FOR LARGE BODIES OF WATER:
TRUE BEAUTY COMES FROM WITHIN AND MUST BE CULTIVATED!

Many factors determine the quality of a body of water. Fish and waterfowl introduce nutrients, and falling leaves in autumn, as well as blossoms in spring increase the availability of nutrients. The results are algae growth and formation of sludge that silts up the body of water. OASE water quality products offer a wide range of options; the regenerative powers of the body of water are reinforced and accumulating nutrients are broken down biologically. Such artificial lakes and ponds enjoy sustainable clarity and create a habitat where not only plants and fish thrive – due to innovative OASE products!

Our selection table on the following page helps you to select the right OASE products for the size of your body of water, and it also shows the space that may be required for the appropriate installation. Contact us with any questions, we would be pleased to advise you and to prepare a non-binding quotation.

New in stock:

- OASE ProfiClear Premium page 158
- OASE Wall Skimmer page 164

• Configuration chart	page 142
• Aerators	page 144
• UVC Clarifiers	page 148
• Flow through filters	page 150
• Modular filters	page 152
• Crystal quartz sand filter	page 162
• »Clear Fountain System«	page 166
• Water treatment	page 167
• »Clear Lake System«	page 168
• Surface skimmers	page 170
• Water quality	page 172



CONFIGURATION CHART

	Lake	Lake	Lake	Lake
Active system	Improved water values through aeration	Silt removal	Surface cleaning	ProfiClear Module Filter
Size in m³ ≤ 100	1x Aqua Air 250 1x BioKick CWS	1x SediFree	1x Skimmer 250	1x ProfiSkim 100, 1x M1, 1x AquaMax Expert 1x ProfiClear Premium Drum filter 1x ProfiClear Premium Moving Bed module 1x ProfiClear Premium Individual module 2x Bitron Gravity, 15x Phosless
Space requirements [cm]				max. 150 x 400
Size in m³ ≤ 150	1x Aqua Air 250 2x BioKick CWS	2x SediFree	1x Skimmer 250	1x ProfiSkim 100, 1x M1, 1x AquaMax Expert 1x ProfiClear Premium Drum filter 2x ProfiClear Premium Moving Bed module 1x ProfiClear Premium Individual module 2x Bitron Gravity, 15x Phosless
Space requirements [cm]				max. 150 x 500
Size in m³ ≤ 200	1x Aqua Air 250 2x BioKick CWS	2x SediFree	1x Skimmer 250	2x ProfiSkim 100, 1x M1, 2x AquaMax Expert 2x ProfiClear Premium Drum filter 2x ProfiClear Premium Moving Bed module 2x ProfiClear Premium Individual module 4x Bitron Gravity, 15x Phosless
Space requirements [cm]				max. 200 x 400
Size in m³ ≤ 300	2x Aqua Air 250 3x BioKick CWS	3x SediFree	2x Skimmer 250	3x ProfiSkim 100, 2x M1, 3x AquaMax Expert 3x ProfiClear Premium Drum filter 3x ProfiClear Premium Moving Bed module 3x ProfiClear Premium Individual module 6x Bitron Gravity, 15x Phosless
Space requirements [cm]				max. 300 x 400
Size in m³ ≤ 500	2x Aqua Air 250 5x BioKick CWS	5x SediFree	2x Skimmer 250	4x ProfiSkim 100, 2x M1, 4x AquaMax Expert 4x ProfiClear Premium Drum filter 4x ProfiClear Premium Moving Bed module 4x ProfiClear Premium Individual module 8x Bitron Gravity, 15x Phosless
Space requirements [cm]				max. 400 x 400
Size in m³ ≤ 750	2x Aqua Air 250 7x BioKick CWS	7x SediFree	3x Skimmer 250	6x ProfiSkim 100, 3x M1, 6x AquaMax Expert 6x ProfiClear Premium Drum filter 6x ProfiClear Premium Moving Bed module 6x ProfiClear Premium Individual module 12x Bitron Gravity, 30x Phosless
Space requirements [cm]				max. 600 x 400
Size in m³ ≤ 1.000	1x Air Flo 1.5 kW 9x BioKick CWS	9x SediFree	4x Skimmer 250	8x ProfiSkim 100, 4x M1, 8x AquaMax Expert 8x ProfiClear Premium Drum filter 8x ProfiClear Premium Moving Bed module 8x ProfiClear Premium Individual module 16x Bitron Gravity, 30x Phosless
Space requirements [cm]				max. 800 x 400
Size in m³ ≤ 2.000	1x Air Flo 1.5 kW 18x BioKick CWS	18x SediFree	8x Skimmer 250	On request
Space requirements [cm]				
Size in m³ ≤ 5.000	1x Air Flo 4.0 kW, 1x Air Flo 1.5 kW, 45x BioKick CWS	On request	On request	On request
Space requirements [cm]				
Size in m³ ≤ 10.000	2x Air Flo 4.0 kW 90x BioKick CWS	On request	On request	On request
Space requirements [cm]				
Size in m³ ≤ 15.000	3x Air Flo 4.0 kW 135x BioKick CWS	On request	On request	On request
Space requirements [cm]				
Size in m³ ≤ 20.000	4x Air Flo 4.0 kW 180x BioKick CWS	On request	On request	On request
Space requirements [cm]				

Note on runtimes: For lake configurations all of the systems should be operated continuously 24 h a day during the vegetation period.
Pool configurations should be operated at least 12 out of every 24 h.
BioKick CWS prices on request.

* Assumption: Module filter system in pumped setup

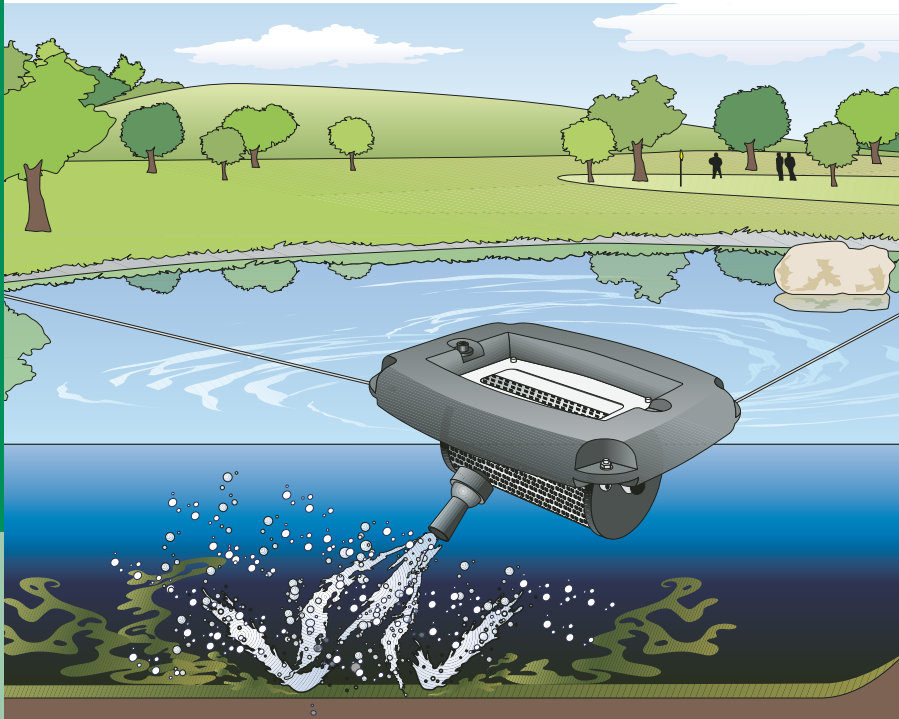
Abbreviations:

M1 = ProfiClear Classic pump chamber
M2 = ProfiClear Classic coarse debris extractor
M3 = ProfiClear Classic filter foam module
M5 = ProfiClear Classic phosphate binder module

Clear Fountain System = dosing station
PHW = active ingredient: Sulphuric acid **SF** = suction filter basket
ADR = active ingredient: Hydrogen peroxide **D** = sand filter
ASS = active ingredient: Ammonium chloride **AFM** = activated filter medium

	Lake	Pool	Pool
Active system	Clear Lake System	Clear Fountain System	Clear Lake System
Size in m³ ≤ 100	1x Clear Lake 250 1x D 800, 2x SF 200/250/25E, 13x Quartz sand (25 kg), 1x Control panel	1x Clear Fountain System, 1x PHW 30, 1x ADR 90, 1x ASS 100, 2x SF 200/250/25E, 2x D 800, 26x AFM (25 kg), 1x Control panel	1x Clear Lake 250, 2x SF 200/250/25E, 1x D 800, 13x AFM (25 kg), 1x Control panel
Space requirements [cm]	max. 100 x 250	max. 100 x 350	max. 100 x 300
Size in m³ ≤ 150	1x Clear Lake 250, 2x SF 200/250/25E, 1x D 800, 13x Quartz sand (25 kg), 1x Control panel	1x Clear Fountain System, 1x PHW 30, 1x ADR 90, 1x ASS 100, 3x SF 200/250/25E, 3x D 800, 39x AFM (25 kg), 1x Control panel	1x Clear Lake 250, 3x SF 200/250/25E, 2x D 800, 26x AFM (25 kg), 1x Control panel
Space requirements [cm]	max. 100 x 250	max. 100 x 450	max. 100 x 400
Size in m³ ≤ 200	1x Clear Lake 250, 2x SF 200/250/25E, 1x D 800, 13x Quartz sand (25 kg), 1x Control panel	1x Clear Fountain System, 1x PHW 30, 1x ADR 90, 1x ASS 100, 4x SF 200/250/25E, 4x D 800, 52x AFM (25 kg), 1x Control panel	1x Clear Lake 250, 3x SF 200/250/25E, 2x D 800, 26x AFM (25 kg), 1x Control panel
Space requirements [cm]	max. 100 x 250	max. 100 x 550	max. 100 x 400
Size in m³ ≤ 300	1x Clear Lake 250, 3x SF 200/250/25E, 2x D 800, 26x Quartz sand (25 kg), 1x Control panel	1x Clear Fountain System, 1x PHW 30, 1x ADR 90, 1x ASS 100, 6x SF 200/250/25E, 6x D 800, 78x AFM (25 kg), 1x Control panel	1x Clear Lake 250, 4x SF 200/250/25E, 3x D 800, 39x AFM (25 kg), 1x Control panel
Space requirements [cm]	max. 100 x 350	max. 250 x 450	max. 100 x 500
Size in m³ ≤ 500	1x Clear Lake 500, 3x SF 200/250/25E, 2x D 800, 26x Quartz sand (25 kg), 1x Control panel	1x Clear Fountain System, 1x PHW 30, 1x ADR 90, 1x ASS 100, 10x SF 200/250/25E, 10x D 800, 130x AFM (25 kg), 1x Control panel	1x Clear Lake 500, 5x SF 200/250/25E, 4x D 800, 52x AFM (25 kg), 1x Control panel
Space requirements [cm]	max. 100 x 350	max. 250 x 550	max. 100 x 600
Size in m³ ≤ 750	1x Clear Lake 500, 4x SF 200/250/25E, 3x D 800, 39x Quartz sand (25 kg), 1x Control panel	1x Clear Fountain System, 1x PHW 30, 1x ADR 90, 1x ASS 100, 15x SF 200/250/25E, 15x D 800, 195x AFM (25 kg), 1x Control panel	1x Clear Lake 500, 7x SF 200/250/25E, 6x D 800, 78x AFM (25 kg), 1x Control panel
Space requirements [cm]	max. 100 x 450	max. 250 x 750	max. 250 x 450
Size in m³ ≤ 1.000	1x Clear Lake 500, 1x Clear Lake 250, 6x SF 200/250/25E, 4x D 800, 52x Quartz sand (25 kg), 1x Control panel	1x Clear Fountain System, 1x PHW 30, 1x ADR 90, 1x ASS 100, 20x SF 200/250/25E, 20x D 800, 260x AFM (25 kg), 1x Control panel	2x Clear Lake 500, 9x SF 200/250/25E, 8x D 800, 104x AFM (25 kg), 1x Control panel, 1x Skimmer 250
Space requirements [cm]	max. 100 x 550	max. 250 x 1200	max. 250 x 450
Size in m³ ≤ 2.000	2x Clear Lake 500, 8x SF 200/250/25E, 6x D 800, 78x Quartz sand (25 kg), 1x Control panel	On request	On request
Space requirements [cm]	max. 250 x 550		
Size in m³ ≤ 5.000	1x Clear Lake 5000, 11x SF 200/250/25E, 10x D 800, 130x Quartz sand (25 kg), 1x Control panel	On request	On request
Space requirements [cm]	max. 250 x 750		
Size in m³ ≤ 10.000	1x Clear Lake 20000, 11x SF 200/250/25E, 10x D 800, 130x Quartz sand (25 kg), 1x Control panel, 1x Air Flo 2000	On request	On request
Space requirements [cm]	max. 250 x 850		
Size in m³ ≤ 15.000	1x Clear Lake 20000, 11x SF 200/250/25E, 10x D 800, 130x Quartz sand (25 kg), 1x Control panel, 2x Air Flo 2000	On request	On request
Space requirements [cm]	max. 250 x 850		
Size in m³ ≤ 20.000	1x Clear Lake 20000, 11x SF 200/250/25E, 10x D 800, 130x Quartz sand (25 kg), 1x Control panel, 3x Air Flo 2000	On request	On request
Space requirements [cm]	max. 250 x 850		

Comment on space requirements: Net surface requirement, incl. distance between the filter units, plus walk-on surface.



	Fresh Water	Pool Water	Sea Water	220-240 V	400 V	110-120 V	50 Hz	60 Hz
AquaAir 250								
AquaAir 250 / A								

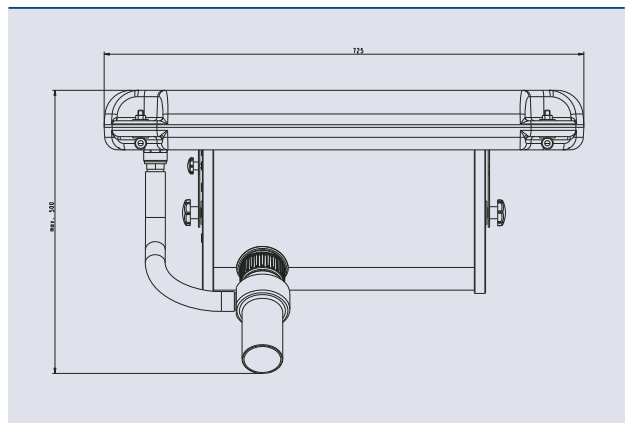
AQUAAIR 250 / AQUAAIR 250/A

Oxygen plays a crucial role in breaking down nutrients in water. Many of the problems associated with an artificial lake or pond, such as algae infestation, silt or odour nuisance can be attributed to oxygen deficits. Missing oxygen can be fed into the body of water through specific water movement that introduces air. This stabilises a body of water's biological power of regeneration and results in optimal quality of the artificial lake or pond.

Product characteristics at a glance

- Adjustable injection nozzle for specific application of oxygen
- Depth penetration to 4 metres
- High flow speeds transform any standing body of water into a flowing body of water

Ideal supplements to this product are BioKick CWS and SediFree. Information on each of these products are found on pages 172 and 173.





Injection nozzle
Adjustable injector nozzle for specific oxygen input with supplemental bore for deep ventilation

Drive
Pump drive with venturi nozzle

Stainless steel basket
High-quality design with corrosion-resistant filter basket and suspension

Fastening material
Easy, secure anchoring of the aerator thanks to the fastening material included in the scope of delivery

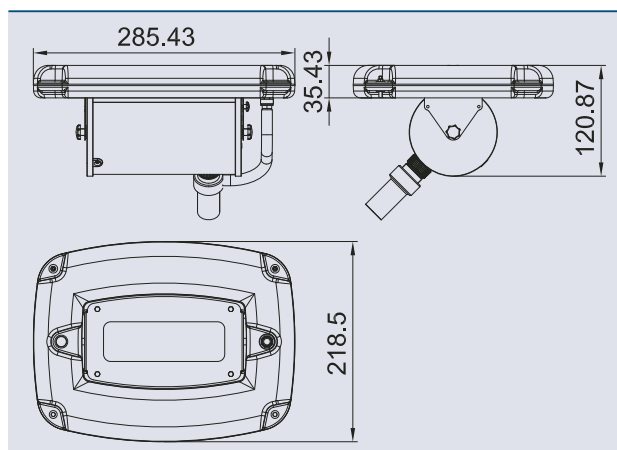
Before:



After:



The Aqua Air 250 is a floating aerator that provides an adequate supply of oxygen for bodies of water up to 250,000 litres. A pump supplies the air/water mixture to the artificial pond or lake via the venturi principle. The high volume flow guarantees air supply in the entire body of water through strong flow movements. Deep zones as well as shallow water zones can be optimally supplied with oxygen through the adjustable angle of the flow injector.



AquaAir		250	AquaAir		250 / A
Dimensions (L x W x H)	[mm]	725 x 555 x 310	Dimensions (L x W x H)	[inch]	29 x 22 x 12
Rated voltage	[V/Hz]	230 / 50	Rated voltage	[V/Hz]	110-120 / 60
Power consumption (Pump)	[W]	650	Power consumption (Pump)	[W/A]	700 / 5.8
Flow rate max.	[l/h]	30000	Flow rate max.	[ghp max]	7000
Air displacement quantity	[l/h]	ca. 8500	Air displacement quantity	[ghp max]	2500
Radiation depth	[m*]	up to 4.0	Radiation depth	[ft*]	up to 13
Filter surface intake	[cm ²]	ca. 3000	Filter surface intake	[sq.inch]	approx. 465
For bodies of water to max.	[m ³]	250	For bodies of water to max.	[gal]	65000
Minimum water depth	[m]	0.5	Minimum water depth	[inch]	20
Cable length	[m]	30.0	Cable length	[ft]	75
Weight	[kg]	28.0	Weight	[lbs]	66
Order no.		57479			57487

* Depends on the jet angle set



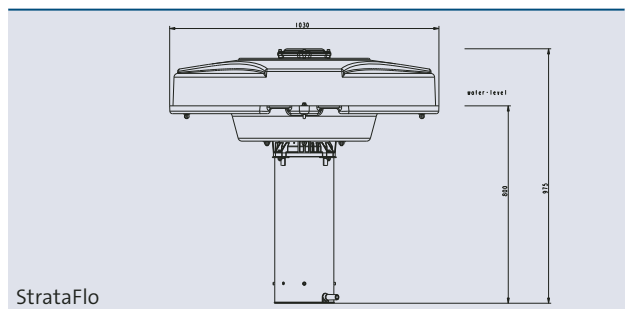
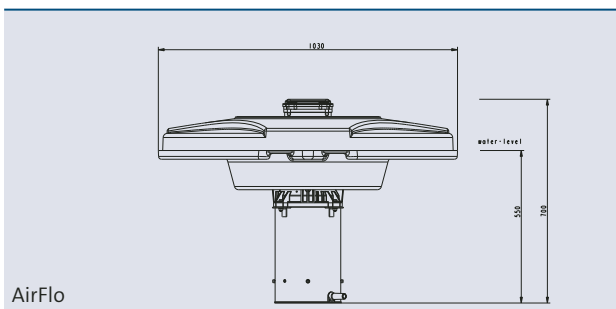
	Fresh Water	Pool Water	Sea Water	220-240 V	400 V	110-120 V	50 Hz	60 Hz	Plug and Spray
AirFlo 1,5 kW									
AirFlo 4 kW									
StrataFlo 2 HP									
StrataFlo 5 HP									

AIRFLO 1,5 kW/4 kW, STRATAFLO 2 2HP/5HP (3-PHASE)

Air Flo sets new standards in the field of lake aeration and decoration: The axial propeller technology ensures impressive and unequalled water flow rates of up to 295,000 l/h – for an optimal supply of oxygen to the lake.

Product characteristics at a glance

- Axial propeller technology for maximum water flow rates
- Voluminous »Trumpet« type water patter
- Easy installation and maintenance through bayonet technology





Bayonet technology
for easy mounting.



Fastening material
Easy, secure anchoring of the aerator thanks to the fastening material included in the scope of delivery.



Earthing pin plug + control box
The 230 V version is delivered ready-to-operate with control box and earthing pin plug.
CEE-connector + protection switch
The 400 V version comes with a ready-to-connect, 5-pole CEE connector and motor protection switch.



Illumination Set MIDI / MAXI / AirFlo LED/01

Illumination Set MIDI / MAXI / AirFlo LED/01

For an impressive floating fountain even at night – as easy as our proven AirFlo system, we offer you a LED version of our illumination kit with three spotlights each. A unique connection system makes it very easy to install the spotlights on the float. The UST 150 transformer is mounted easily to the pump basket directly.

Set of 3 LED

- 3 x LunAqua 10 LED, each with a 10 W LED bulb
- 3 x Light mounting brackets
- 3 x Special stainless steel holder for fastening the transformer
- 1 x Safety transformer 150 VA, 230 V-12 V, 50 Hz incl. 50.0 + 2.0 m cable

Order no. 50479

Powerdata of the different water patterns	AirFlo 1.5 kW / 230V	AirFlo 4.0 kW / 400V		StrataFlo 2 HP	StrataFlo 5 HP (3-Phase)
Water pattern Fountain H x W* [m]	0.8 x 3.5	1.5 x 6.0	[ft]	3 x 12	5 x 20
Flow rate [l/h]	165000	295000	[gpm]	700	1250
Lake size					
Minimum lake size [m ²]	100	500	[sq.ft]	108	538
Opt. effect for lakes up to [m ²]	5000	15000	[sq.ft]	53800	16200
Suction depth max. [m]	4.0	5.0	[ft]	13.1	16.4

	AirFlo 1.5 kW / 230V	AirFlo 4.0 kW / 400V		StrataFlo 2 HP	StrataFlo 5 HP (3-Phase)
Dimensions (ø x H) [mm]	700 x 1150	950 x 1150	[inch]	46 x 28	46 x 38
Nominal voltage [V/Hz]	230/50	400/50	[V/Hz]	230/60	200-230/60
Pump power [KW]	1.5	4.0	[W/A]	2749/13.2	3738/19.8
Nominal current [A]	10.2	9.6	[W/A]	2749/13.2	3738/19.8
Minimum water depth [m]	0.90	1.15	[ft]	3	4
Cable length [m]	50.0 + 2.0	50.0 + 2.0	[ft]	160	160
Weight [kg]	ca. 40.0	ca. 60.0	[lbs]	88	132
Order no.	50183	50185		50272	50274



	Fresh Water	Pool Water	Sea Water	220-240 V	400 V	110-120 V	50 Hz	60 Hz
Bitron 110 C								
Bitron 55 W								

BITRON 110 C

The Bitron 110 C effectively reduces algae and the number of pathogens and bacteria in the body of water and thus consistently ensures clear and healthy water.

Product characteristics at a glance

- Well thought-out bypass technology for custom water flow adjustment on the UVC device enables optimum adaptation to the connected filtration pump
- Automatic and permanent bulb cleaning function sustainably ensures full efficiency of the UVC light source
- Integrated magnets protect the pond technology that is implemented (including pump and filter) from aggressive calcium deposits.
- Indicator light for visual monitoring of device function



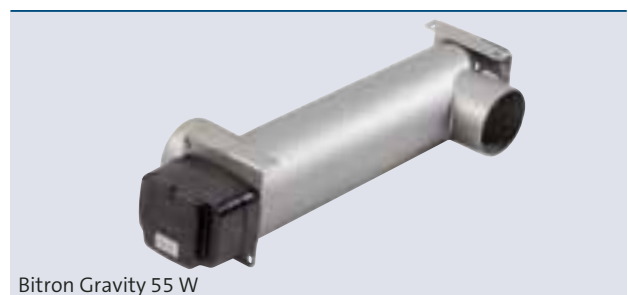
Bitron 110 C

BITRON GRAVITY 55 W

Bitron Gravity 55 W, highly-efficient – perfect for gravity-fed filter systems

Product characteristics at a glance

- Suitable for ponds to 70 m³
- Extremely effective elimination of suspended algae and reduction in pathogenic bacteria levels (at 12.5 m³/h) – similar to an immersion UVC
- 100 %, VDE-certified safety; does not cause eye injuries
- Particularly energy efficient thanks to electronic ballast
- Unusually effective sterilisation, thanks to long water contact time in the Bitron
- Flow-optimised reactor design ensures direct and virtually loss-free UV radiation
- High-quality V4A stainless steel housing for stability and good reflection rates
- Inlet and outlet connection in DN 100



Bitron Gravity 55 W



Bitron 110 C

Clever bypass system combines high flow rates with optimal duration of radiation
 Permanent self-cleaning thanks to patented cleaning rotor
 Up to 30 % energy savings through electronic ballast

Recommendation

Do not forget to replace UVC bulbs regularly, ideally in the spring!

Accessories (must be ordered separately)



Replacement bulb for Bitron Gravity 55 W and Bitron 110 C

1 bulb is required for complete configuration of Bitron Gravity 55 W

2 bulbs are required for complete configuration of Bitron 110 C

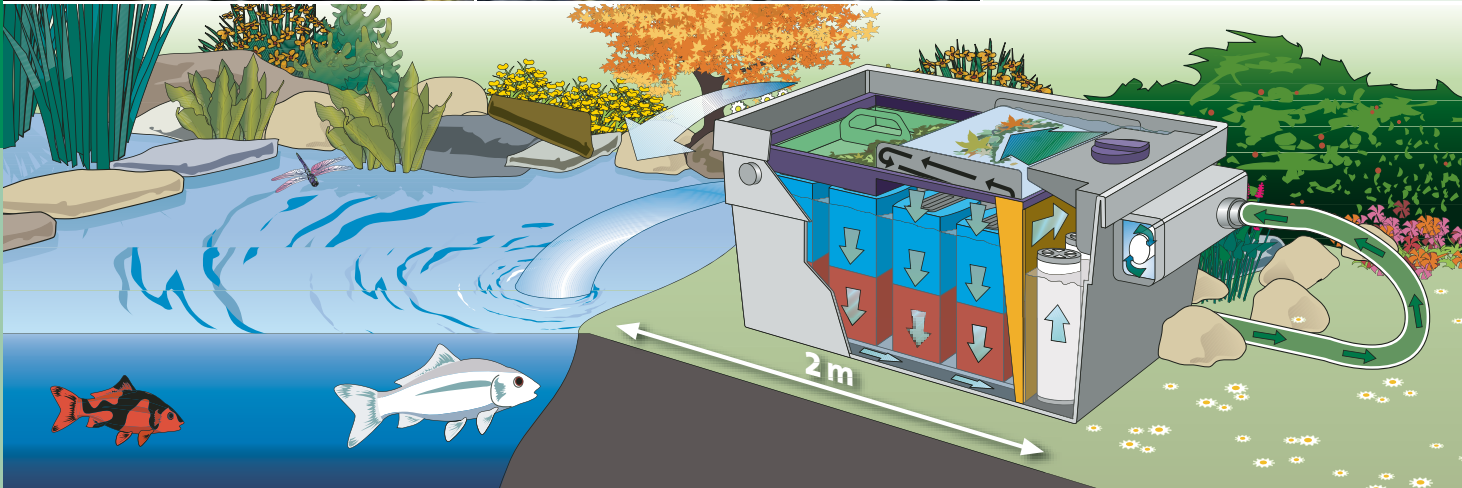
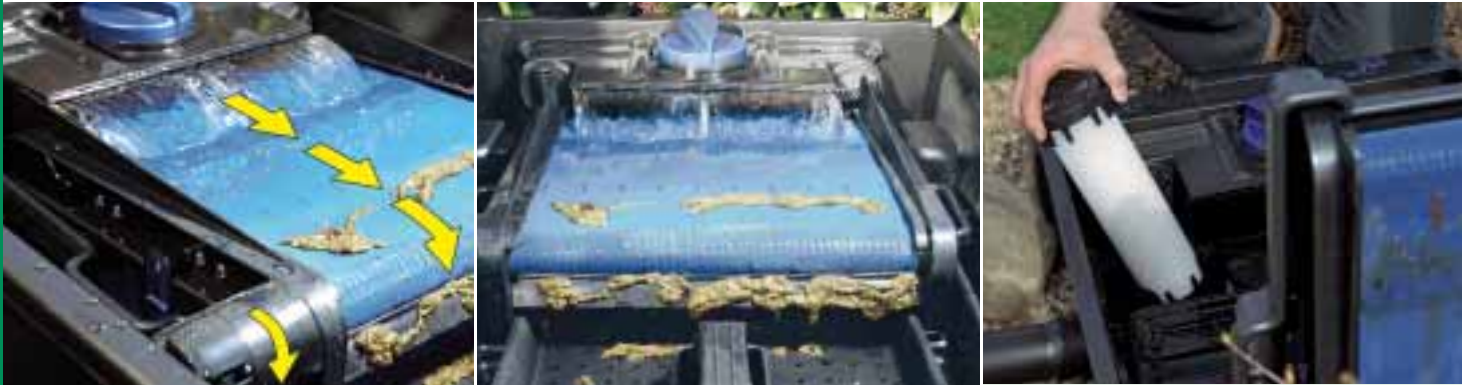
Order no. **56636**

Bitron 110 C		
Dimensions (L x W x H)	[mm]	731 x 216 x 201
Rated voltage	[V/Hz]	220-240/50-60
Inlet stepped hose adapter	[inch]	¾ to 2
Outlet (2x)	[inch]	1 to 1 ½
Visual function check		Indicator light
Connection to		ProfiClear module filter/BioTec ScreenMatic 36
Operating pressure max.	[bar]	1.0
Suitable pump capacity max.	[l/h]	40000
Power consumption	[W]	110
Flow-through UVC, without bypass	[l/h]	12000
Cable length	[m]	5.0
Order no.		56902

Bitron Gravity 55 W

Unusually powerful, efficient UVC clarifier
 Extremely effective sterilisation thanks to well thought-out flow optimisation
 Extremely easy and flexible installation before or after the filter system

Bitron Gravity 55 W		
Dimensions (L x W x H)	[mm]	700 x 260 x 160
Rated voltage	[V/Hz]	220 – 240 / 50/60
Power consumption	[W]	55
Power cable length	[m]	5.00
Net weight	[kg]	7.10
Guarantee* ^G	[Years]	2
UVC power	[W]	55
Number of inlets	[Unit]	1
Connections, inlet		DN 100
Number of outlets	[Unit]	1
Connections, outlet		DN 100
Max. operating pressure	[bar]	1.00
Pump capacity, max.	[l/h]	30000
Rec. flow rate (gravitation)	[l/h]	12500
Pump capacity, min.	[l/h]	5000
Suitable for ponds to max.	[m³]	100.0
Suitable for ponds with fish stock	[m³]	50.0
Suitable for ponds with koi*	[m³]	20.0
Material		Plastic / stainless steel
Connection to		ProfiClear, AquaMax Gravity Eco
Type of use		Pump fed system, gravity-fed system
Other		Vis. function check
Order no.		50946



BioTec ScreenMatic 36	Fresh Water	Pool Water	Sea Water	220-240 V	400 V	110-120 V	50 Hz	60 Hz

BIO TEC SCREENMATIC 36

The biological-mechanical filtration function in tandem with outstanding technology for extracting coarse pollutants guarantee clear and healthy water with low maintenance.

Product characteristics at a glance

- Effective, mechanical and safe extraction of coarse pollutants, and thus significantly longer service life

- Collection tanks for simple removal of extracted coarse pollutants
- Extractor sieve is cleaned automatically
- Optimum growth of filter biology thanks to different filter media with extensive settlement surfaces



BioTec ScreenMatic 36



BioTec ScreenMatic 36